



Order: (888)-282-5810 (Phone)
(818)-707-0392 (Fax)
order@abiocode.com
Web: www.Abiocode.com

UBC9 Antibody, Rabbit Polyclonal

Cat#: R0047-2

Quantity: 100 ul

Predicted M.W.: 18 kDa

Lot#: Refer to vial

Application: WB, ELISA

Uniprot ID: P63279

Background:

UBC9 is a member of the E2 ubiquitin-conjugating enzyme family. It accepts the ubiquitin-like proteins SUMO1, SUMO2, SUMO3 and SUMO4 from the UBLE1A-UBLE1B E1 complex and catalyzes their covalent attachment to protein substrates with the help of an E3 ligase. UBC9 is essential for nuclear architecture and chromosome segregation.

Other Names:

AT4G27960, T13J8.70, T13J8_70, UBE2I, UBIQUITIN CONJUGATING ENZYME 9, UBIQUITIN-PROTEIN LIGASE

Source and Purity:

Rabbit polyclonal antibodies were produced by immunizing animals with a GST-fusion protein containing the full length human UBC9. Antibodies were purified by affinity purification using immunogen.

Storage Buffer and Condition:

Supplied in 1 x PBS (pH 7.4), 100 ug/ml BSA, 40% Glycerol, 0.01% NaN₃. Store at -20 °C. Stable for 6 months from date of receipt.

Species Specificity:

Human

Recommended Conditions:

WB: 1:1,000-1:5,000 (detect endogenous protein*)

ELISA: > 10,000 (detect immunogen)

*: The apparent protein size on WB may be different from the calculated M.W. due to modifications.



Order: (888)-282-5810 (Phone)
(818)-707-0392 (Fax)
order@abiocode.com
Web: www.Abiocode.com

Product Data:

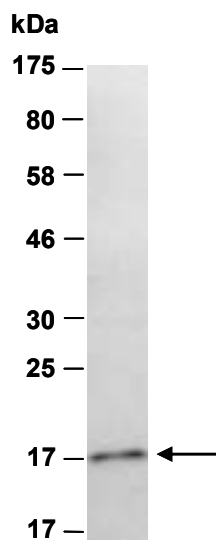


Fig 1. Western blot of total cell extracts from human 293T cells, using Ab (R0047-2) at RT for 2 h.

Last Update: 03/2011

**For research use only. Not for therapeutic or diagnostic purposes.
Abiocode, Inc., 29397 Agoura Rd., Ste 106, Agoura Hills, CA 91301**