



Order: (888)-282-5810 (Phone)
(818)-707-0392 (Fax)
order@abiocode.com
Web: www.Abiocode.com

EPO (vPair™) Antibodies

Cat#: R0064-vp

Lot#: Refer to vial

Predicted M.W.: 21 kDa

Uniprot ID: P07321

Application: WB, ELISA

Quantity: 50 ul EPO (N) (R0064-1) Rabbit Polyclonal Antibody &
50 ul EPO (C) (R0064-2) Rabbit Polyclonal Antibody

Product Introduction:

vPair™ antibodies represent a pair of fully characterized antibodies that recognize two different regions of a target protein. The product is developed by Abiocode to address whether the signal observed truly represents the protein of interest, an often encountered issue in antibody-based assays. The use of a pair of fully characterized vPair™ antibodies in the same assay can validate signal specificity since vPair™ antibodies recognize two independent epitopes of the same protein. Different sets of vPair™ antibodies are developed at Abiocode to work with specific applications, including antibody arrays, Western blot, IP-Western, CHIP, IHC, and FACS.

Background:

Erythropoietin (EPO) is a member of the EPO/TPO family. It is a glycosylated cytokine that is involved in the regulation of erythrocyte differentiation and initiating hemoglobin synthesis. EPO is also thought to have neuroprotective activity against a variety of potential brain injuries and anti-apoptotic functions in several tissue types.

Other Names:

EP, MGC138142, MVCD2 (human)

Source and Purity:

Rabbit polyclonal antibodies were produced by immunizing animals with a GST-fusion protein containing either the N-terminal region [EPO (N) (R0064-1)] or the C-terminal region [EPO (C) (R0064-2)] of mouse EPO. Antibodies were purified by affinity purification using immunogen.

Storage Buffer and Condition:

Supplied in 1 x PBS (pH 7.4), 100 ug/ml BSA, 40% Glycerol, 0.01% NaN₃. Store at -20 °C. Stable for 6 months from date of receipt.

For research use only. Not for therapeutic or diagnostic purposes.
Abiocode, Inc., 29397 Agoura Rd., Ste 106, Agoura Hills, CA 91301

Species Specificity:

Mouse

Recommended Conditions:

WB: 1:1,000-1:5,000 (detect endogenous protein*)

ELISA: > 10,000 (detect immunogen)

*: The apparent protein size on WB may be different from the calculated M.W. due to modifications.

Product Data:

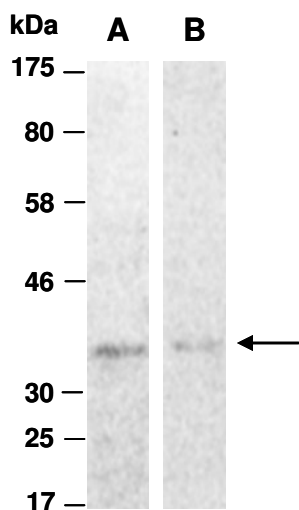


Fig 1. Western blot of total cell extracts from mouse liver, using Ab (A) EPO (N) (R0064-1) or (B) EPO (C) (R0064-2) at RT for 2 h.