



Order: (888)-282-5810 (Phone)
(818)-707-0392 (Fax)
order@abiocode.com
Web: www.Abiocode.com

SHH (vPair™) Antibodies

Cat#: R0077-vp

Lot#: Refer to vial

Predicted M.W.: 50 kDa

Uniprot ID: Q15465

Application: WB, ELISA

Quantity: 50 ul SHH (C1) (R0077-1) Rabbit Polyclonal Antibody &
50 ul SHH (C2) (R0077-2) Rabbit Polyclonal Antibody

Product Introduction:

vPair™ antibodies represent a pair of fully characterized antibodies that recognize two different regions of a target protein. The product is developed by Abiocode to address whether the signal observed truly represents the protein of interest, an often encountered issue in antibody-based assays. The use of a pair of fully characterized vPair™ antibodies in the same assay can validate signal specificity since vPair™ antibodies recognize two independent epitopes of the same protein. Different sets of vPair™ antibodies are developed at Abiocode to work with specific applications, including antibody arrays, Western blot, IP-Western, ChIP, IHC, and FACS.

Background:

Sonic hedgehog (SHH) protein is instrumental in the development of all known animals. In the embryo, it is the key signal in patterning of the ventral neural tube, the anterior-posterior limb axis, and the ventral somites. In the adult it controls stem cell proliferation. It binds to the patched (PTC) receptor, which functions in association with smoothened (SMO) to activate the transcription of genes. Disruption in SHH signaling during development either through defects in the protein, or maternal teratogen consumption can lead to developmental disorders such as holoprosencephaly (HPE). Abberant activation of the SHH signaling pathway is associated with several types of cancer.

Other Names:

HHG1, HLP3, HPE3, MCOPCB5, SMMCI, TPT, TPTPS

Source and Purity:

Rabbit polyclonal antibodies were produced by immunizing animals with a GST-fusion protein containing two distinct C-terminal regions [SHH (C1) (R0077-1) and SHH (C2) (R0077-2)] of human SHH. Antibodies were purified by affinity purification using immunogen.

Storage Buffer and Condition:

Supplied in 1 x PBS (pH 7.4), 10 ug/ml BSA, 40% Glycerol, 0.01% NaN₃. Store at -20 °C. Stable for 6 months from date of receipt.

Species Specificity:

Human, Mouse

Recommended Conditions:

WB: 1:1,000-1:5,000 (detect endogenous protein*)

ELISA: > 10,000 (detect immunogen)

*: The apparent protein size on WB may be different from the calculated M.W. due to modifications.

Product Data:

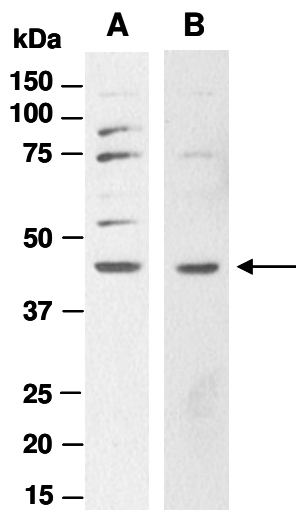


Fig 1. Western blot of total cell extracts from mouse liver, using Ab (A) SHH (C1) (R0077-1) or (B) SHH (C2) (R0077-2) at RT for 2 h.