



Order: (888)-282-5810 (Phone)
(818)-707-0392 (Fax)
order@abiocode.com
Web: www.Abiocode.com

HDAC4 (vPair™) Antibodies

Cat#: R0086-vp

Lot#: Refer to vial

Predicted M.W.: 119 kDa

Uniprot ID: P56524

Application: WB, ELISA

Quantity: 50 ul HDAC4 (N) (R0086-1) Rabbit Polyclonal Antibody &
50 ul HDAC4 (C) (R0086-2) Rabbit Polyclonal Antibody

Product Introduction:

vPair™ antibodies represent a pair of fully characterized antibodies that recognize two different regions of a target protein. The product is developed by Abiocode to address whether the signal observed truly represents the protein of interest, an often encountered issue in antibody-based assays. The use of a pair of fully characterized vPair™ antibodies in the same assay can validate signal specificity since vPair™ antibodies recognize two independent epitopes of the same protein. Different sets of vPair™ antibodies are developed at Abiocode to work with specific applications, including antibody arrays, Western blot, IP-Western, ChIP, IHC, and FACS.

Background:

Histone deacetylase 4 (HDAC4) deacetylates lysine residues on the N-terminal part of the core histones (H2A, H2B, H3 and H4). Histone deacetylation produces a tag for epigenetic repression and plays a role in transcriptional regulation, cell cycle progression and developmental events. HDAC4 does not bind DNA directly but through transcription factors MEF2C and MEF2D.

Other Names:

AHO3, BDMR, HA6116, HD4, HDAC-A, HDACA, KIAA0288

Source and Purity:

Rabbit polyclonal antibodies were produced by immunizing animals with a GST-fusion protein containing either the N-terminal region [HDAC4 (N) (R0086-1)] or the C-terminal region [HDAC4 (C) (R0086-2)] of human HDAC4. Antibodies were purified by affinity purification using immunogen.

Storage Buffer and Condition:

Supplied in 1 x PBS (pH 7.4), 100 ug/ml BSA, 40% Glycerol, 0.01% NaN₃. Store at -20 °C. Stable for 6 months from date of receipt.

Species Specificity:

Human

Recommended Conditions:

WB: 1:1,000-1:5,000 (detect endogenous protein*)

ELISA: > 10,000 (detect immunogen)

*: The apparent protein size on WB may be different from the calculated M.W. due to modifications.

Product Data:

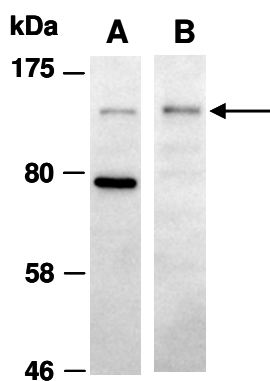


Fig 1. Western blot of total cell extracts from human HeLa, using Ab (A) HDAC4 (N) (R0086-1) or (B) HDAC4 (C) (R0086-2) at RT for 2 h.