



Order: (888)-282-5810 (Phone)  
(818)-707-0392 (Fax)  
[order@abiocode.com](mailto:order@abiocode.com)  
Web: [www.Abiocode.com](http://www.Abiocode.com)

---

## **KLF4 (C) Antibody, Rabbit Polyclonal**

**Cat#: R0088-1**

**Quantity: 100 ul**

**Predicted M.W.: 55 kDa**

**Lot#: Refer to vial**

**Application: WB**

**Uniprot ID: O43474**

### **Background:**

Kruppel-like factor 4 (gut) (KLF4) is a transcription factor which acts as an activator and a repressor. KLF4 is known to bind to the CACCC core sequence. It binds to multiple sites in the 5qflanking region of its own gene and can activate its own transcription. It is required for establishing the barrier function of the skin and for postnatal maturation and maintenance of the ocular surface. It plays a role in the differentiation of epithelial cells and may function in skeletal and kidney development.

### **Other Names:**

RP11-150J11.1, EZF, GKLF

### **Source and Purity:**

Rabbit polyclonal antibodies were produced by immunizing animals with a GST-fusion protein containing the C-terminal region of human KLF4. Antibodies were purified by affinity purification using immunogen.

### **Storage Buffer and Condition:**

Supplied in 1 x PBS (pH 7.4), 100 ug/ml BSA, 40% Glycerol, 0.01% NaN<sub>3</sub>. Store at -20 °C. Stable for 6 months from date of receipt.

### **Species Specificity:**

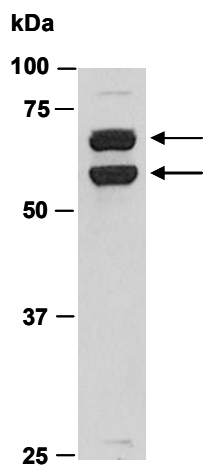
Human, Mouse

### **Tested Applications:**

WB: 1:1,000-1:5,000 (detect endogenous protein\*)

\*: The apparent protein size on WB may be different from the calculated M.W. due to modifications.

**Product Data:**



**Fig 1.** Western blot of total cell extracts from mouse RAW267.1, using Ab (R0088-1) at RT for 2 h.