



Order: (888)-282-5810 (Phone)  
(818)-707-0392 (Fax)  
[order@abiocode.com](mailto:order@abiocode.com)  
Web: [www.Abiocode.com](http://www.Abiocode.com)

---

## SHH (C1) Antibody, Rabbit Polyclonal

**Cat#:** R0077-1

**Quantity:** 100 ul

**Predicted M.W.:** 50 kDa

**Lot#:** Refer to vial

**Application:** WB

**Uniprot ID:** Q15465

### **Background:**

Sonic hedgehog (SHH) protein is instrumental in the development of all known animals. In the embryo, it is the key signal in patterning of the ventral neural tube, the anterior-posterior limb axis, and the ventral somites. In the adult it controls stem cell proliferation. It binds to the patched (PTC) receptor, which functions in association with smoothened (SMO) to activate the transcription of genes. Disruption in SHH signaling during development either through defects in the protein, or maternal teratogen consumption can lead to developmental disorders such as holoprosencephaly (HPE). Abberant activation of the SHH signaling pathway is associated with several types of cancer.

### **Other Names:**

HHG1, HLP3, HPE3, MCOPCB5, SMMCI, TPT, TPTPS

### **Source and Purity:**

Rabbit polyclonal antibodies were produced by immunizing animals with a GST-fusion protein containing the C-terminal region of human SHH. Antibodies were purified by affinity purification using immunogen.

### **Storage Buffer and Condition:**

Supplied in 1 x PBS (pH 7.4), 10 ug/ml BSA, 40% Glycerol, 0.01% NaN<sub>3</sub>. Store at -20 °C. Stable for 6 months from date of receipt.

### **Species Specificity:**

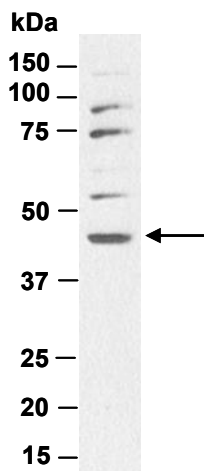
Human, Mouse

### **Tested Applications:**

WB: 1:1,000-1:5,000 (detect endogenous protein\*)

\*: The apparent protein size on WB may be different from the calculated M.W. due to modifications.

**Product Data:**



**Fig 1.** Western blot of total cell extracts from mouse liver, using Ab (R0077-1) at RT for 2 h.