



Order: (888)-282-5810 (Phone)
(818)-707-0392 (Fax)
order@abiocode.com
Web: www.Abiocode.com

HP1a (M) Antibody, Rabbit Polyclonal

Cat#: R0070-1

Quantity: 100 ul

Predicted M.W.: 22 kDa

Lot#: Refer to vial

Application: WB

Uniprot ID: Q61686

Background:

Heterochromatin protein 1-alpha (HP1a) is a highly conserved nonhistone protein belonging to the heterochromatin protein family. The N-terminal chromodomain of HP1a binds to histone H3 tails methylated at \pm Lys-9q(H3K9me), leading to epigenetic repression. Conversely, it is excluded from chromatin when \mp Tyr-41qof histone H3 is phosphorylated (H3Y41ph). It may interact with lamin-B receptor. HP1a is involved in the formation of functional kinetochore through interaction with MIS12 complex proteins.

Other Names:

Cbx5, HP1, 2610029O15Rik, C75991

Source and Purity:

Rabbit polyclonal antibodies were produced by immunizing animals with a GST-fusion protein containing the middle region of mouse HP1a. Antibodies were purified by affinity purification using immunogen.

Storage Buffer and Condition:

Supplied in 1 x PBS (pH 7.4), 100 ug/ml BSA, 40% Glycerol, 0.01% NaN₃. Store at -20 °C. Stable for 6 months from date of receipt.

Species Specificity:

Human, Mouse

Tested Applications:

WB: 1:1,000-1:5,000 (detect endogenous protein*)

*: The apparent protein size on WB may be different from the calculated M.W. due to modifications.

Product Data:

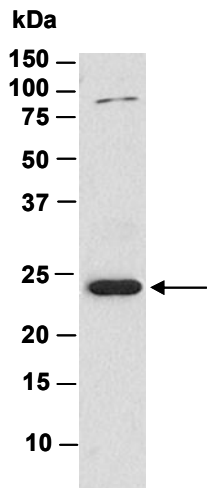


Fig 1. Western blot of total cell extracts from mouse thymus, using Ab (R0070-1) at RT for 2 h.