



Order: (888)-282-5810 (Phone)  
(818)-707-0392 (Fax)  
[order@abiocode.com](mailto:order@abiocode.com)  
Web: [www.Abiocode.com](http://www.Abiocode.com)

---

## HP1-gamma (M) Antibody, Rabbit Polyclonal

**Cat#:** R0069-1

**Quantity:** 100 ul

**Predicted M.W.:** 21 kDa

**Lot#:** Refer to vial

**Application:** WB

**Uniprot ID:** Q9DCC5

### **Background:**

Heterochromatin protein 1-gamma (HP1-gamma) belongs to the heterochromatin protein family. It may be involved in transcriptional silencing in heterochromatin-like complexes. HP1-gamma binds to histone H3 tails methylated at Lys-9q(H3K9me), leading to epigenetic repression. It binds with lamin-B receptor, associating heterochromatin with the inner nuclear membrane. HP1-gamma is involved in the formation of functional kinetochore through interaction with MIS12 complex proteins.

### **Other Names:**

cbx3, hech, xhp1g, hp1hs-gamma

### **Source and Purity:**

Rabbit polyclonal antibodies were produced by immunizing animals with a GST-fusion protein containing the middle region of mouse HP1-gamma. Antibodies were purified by affinity purification using immunogen.

### **Storage Buffer and Condition:**

Supplied in 1 x PBS (pH 7.4), 100 ug/ml BSA, 40% Glycerol, 0.01% NaN<sub>3</sub>. Store at -20 °C. Stable for 6 months from date of receipt.

### **Species Specificity:**

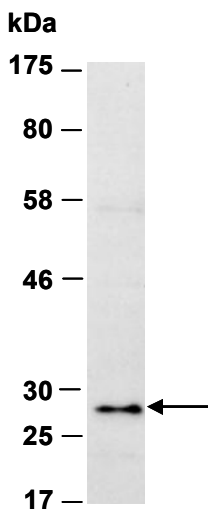
Human, Mouse

### **Tested Applications:**

WB: 1:1,000-1:5,000 (detect endogenous protein\*)

\*: The apparent protein size on WB may be different from the calculated M.W. due to modifications.

**Product Data:**



**Fig 1.** Western blot of total cell extracts from human heLa, using Ab (R0069-1) at RT for 2 h.