



Order: (888)-282-5810 (Phone)  
(818)-707-0392 (Fax)  
[order@abiocode.com](mailto:order@abiocode.com)  
Web: [www.Abiocode.com](http://www.Abiocode.com)

---

## **CD29 (C) Antibody, Rabbit Polyclonal**

**Cat#: R0061-1**

**Quantity: 100 ul**

**Predicted M.W.: 88 kDa**

**Lot#: Refer to vial**

**Application: WB**

**Uniprot ID: P09055**

### **Background:**

Integrin Beta 1 (CD29) is a member of the integrin family of cell adhesion molecules. Integrins are heterodimeric receptors composed of an alpha and a beta subunit. CD29 interacts with a number of different alpha subunits enabling the integrin to bind a number of different extracellular matrix ligands including collagen, fibronectin, laminin and vitronectin. Integrins are involved in tissue repair, hemostasis, cell migration, adhesion, signaling, and have been implicated in cancer.

### **Other Names:**

MGC76178, itgb1, fnrb, gpiia, mdf2, msk12, vla-beta, vlab

### **Source and Purity:**

Rabbit polyclonal antibodies were produced by immunizing animals with a GST-fusion protein containing the C-terminal region of mouse CD29. Antibodies were purified by affinity purification using immunogen.

### **Storage Buffer and Condition:**

Supplied in 1 x PBS (pH 7.4), 100 ug/ml BSA, 40% Glycerol, 0.01% NaN<sub>3</sub>. Store at -20 °C. Stable for 6 months from date of receipt.

### **Species Specificity:**

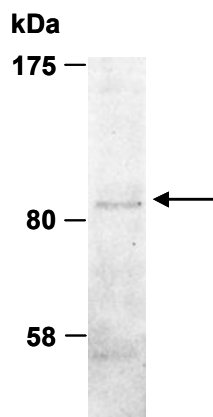
Human, Mouse

### **Tested Applications:**

WB: 1:1,000-1:5,000 (detect endogenous protein\*)

\*: The apparent protein size on WB may be different from the calculated M.W. due to modifications.

**Product Data:**



**Fig 1.** Western blot of total cell extracts from human HeLa, using Ab (R0061-1) at RT for 2 h.