



Order: (888)- 282-5810 (Phone)  
(818)-707-0392 (Fax)  
[order@abiocode.com](mailto:order@abiocode.com)  
Web: [www.Abiocode.com](http://www.Abiocode.com)

---

## **MAFA (N) Antibody, Rabbit Polyclonal**

**Cat#:** R0021-1

**Quantity:** 100 ul

**Predicted M.W.:** 37 kDa

**Lot#:** Refer to vial

**Application:** WB

**Uniprot ID:** Q8NHW3

### **Background:**

MAFA is a transcription factor that binds the insulin enhancer element RIPE3b and activates insulin gene expression. Phosphorylation by GSK3 increases its transcriptional activity and is required for its oncogenic activity. MAFA is implicated as either an oncogene or a tumor suppressor depending on the cell context.

### **Other Names:**

RIPE3b1, hMafA

### **Source and Purity:**

Rabbit polyclonal antibodies were produced by immunizing animals with a GST-fusion protein containing the N-terminal region of human MAFA. Antibodies were purified by affinity purification using immunogen.

### **Storage Buffer and Condition:**

Supplied in 1 x PBS (pH 7.4), 100 µg/ml BSA, 40% Glycerol, 0.01% NaN<sub>3</sub>. Store at -20 °C. Stable for 6 months from date of receipt.

### **Species Specificity:**

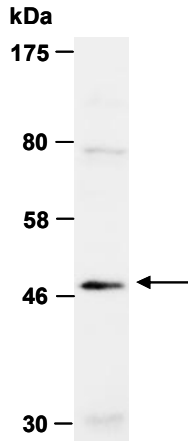
Human, Mouse

### **Tested Applications:**

WB: 1:1,000-1:5,000 (detect endogenous protein\*)

\*: The apparent protein size on WB may be different from the calculated M.W. due to modifications.

**Product Data:**



**Fig 1.** Western blot of total cell extracts from human Jurkat, using Ab (R0021-1) at RT for 2 h.