



Order: (888)-282-5810 (Phone)
(818)-707-0392 (Fax)
order@abiocode.com
Web: www.Abiocode.com

BMP2 (N) Antibody, Rabbit Polyclonal

Cat#: R0046-1

Quantity: 100 ul

Predicted M.W.: 45 kDa

Lot#: Refer to vial

Application: WB

Uniprot ID: P21274

Background:

Bone morphogenetic protein 2 (BMP2) is a secreted protein that belongs to the the TGF-beta superfamily. It acts as a disulfide-linked homodimer and induces bone and cartilage formation. BMP2 is widely expressed in multiple tissues with most abundant levels in lung, spleen and colon. BMP2 has been shown to Interact with many proteins, including SOSTDC1, GREM2, RGMA, RGMB, RGMC and ASPN.

Other Names:

RP23-384M14.3, AI467020, Bmp2a

Source and Purity:

Rabbit polyclonal antibodies were produced by immunizing animals with a GST-fusion protein containing the N-terminal region of mouse BMP2. Antibodies were purified by affinity purification using immunogen.

Storage Buffer and Condition:

Supplied in 1 x PBS (pH 7.4), 100 µg/ml BSA, 40% Glycerol, 0.01% NaN₃. Store at -20 °C. Stable for 6 months from date of receipt.

Species Specificity:

Human, Mouse

Tested Applications:

WB: 1:1,000-1:5,000 (detect endogenous protein*)

*: The apparent protein size on WB may be different from the calculated M.W. due to modifications.

Product Data:

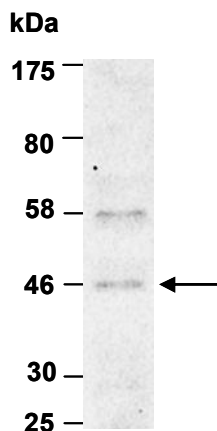


Fig 1. Western blot of total cell extracts from human PC3, using Ab (R0046-1) at RT for 2 h.