



Order: (888)-282-5810 (Phone)
(818)-707-0392 (Fax)
order@abiocode.com
Web: www.Abiocode.com

CDH3 (N) Antibody, Rabbit Polyclonal

Cat#: R0057-1

Quantity: 100 ul

Predicted M.W.: 91 kDa

Lot#: Refer to vial

Application: WB

Uniprot ID: P22223

Background:

CDH3 is a member of the cadherin superfamily. This glycoprotein is involved in calcium-dependent cell-cell adhesion. The gene is located on the long arm of chromosome 16 and has been implicated in breast and prostate cancer through the loss of heterozygosity. Aberrant expression of CDH3 is implicated in cervical adenocarcinomas.

Other Names:

CDHP, HJMD, PCAD

Source and Purity:

Rabbit polyclonal antibodies were produced by immunizing animals with a GST-fusion protein containing the N-terminal region of human CDH3. Antibodies were purified by affinity purification using immunogen.

Storage Buffer and Condition:

Supplied in 1 x PBS (pH 7.4), 100 µg/ml BSA, 40% Glycerol, 0.01% NaN₃. Store at -20 °C. Stable for 6 months from date of receipt.

Species Specificity:

Human, Mouse

Tested Applications:

WB: 1:1,000-1:5,000 (detect endogenous protein*)

*: The apparent protein size on WB may be different from the calculated M.W. due to modifications.

Product Data:

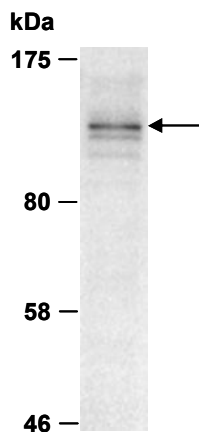


Fig 1. Western blot of total cell extracts from human A431, using Ab (R0057-1) at RT for 2 h.