



Order: (888)- 282-5810 (Phone)  
(818)-707-0392 (Fax)  
[order@abiocode.com](mailto:order@abiocode.com)  
Web: [www.Abiocode.com](http://www.Abiocode.com)

---

## Rabbit Polyclonal anti-SUMO3 Antibody

**Cat#: R0014-1**

**Lot#: Refer to vial**

**Quantity: 100 µl**

**Application: WB**

**Predicted M.W.: 12 kDa**

**Uniprot ID: P55854**

### **Background:**

SUMOylation is a post-translational modification in which Small ubiquitin-related modifiers (SUMOs) are covalently conjugated to target proteins. Protein SUMOylation is involved in many cellular processes, including nuclear transport, transcriptional regulation, DNA replication and repair and signal transduction. The mammalian SUMO family is mainly consistent of 3 isoforms: SUMO1, SUMO2 and SUMO3. While SUMO2 and SUMO3 share about 46% of sequence similarity with SUMO1, they share a 96% similarity between each other. In addition, SUMO1 is conjugated to protein substrates at steady states, while conjugation by SUMO2/3 is inducible in response to various cellular stresses, such as oxidative stress and heat shock.

### **Other Names:**

SMT3A, SMT3H1, SUMO-3

### **Source and Purity:**

Rabbit polyclonal antibodies were produced by immunizing animals with a GST-fusion protein containing human SUMO3. Antibodies were purified by affinity purification using immunogen.

### **Storage Buffer and Condition:**

Supplied in 1x PBS (pH 7.4), 100 µg/ml BSA, 40% Glycerol, 0.01% NaN<sub>3</sub>. Store at -20 °C. Stable for 6 months from date of receipt.

### **Species Specificity:**

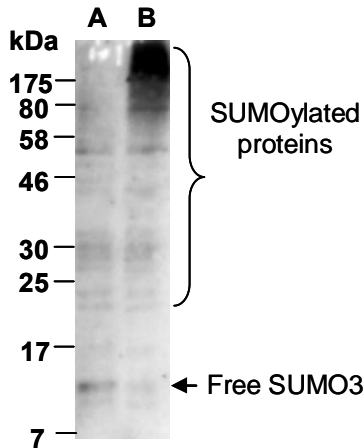
Human

### **Tested Applications:**

WB: 1:1,000-1:5,000 (detect endogenous protein\*)

\*: The apparent protein size on WB may be different from the calculated M.W. due to modifications.

**Product Data:**



**Fig 1.** Western blot of total cell extracts from human 293T cells, either untreated (A) or treated with 0.3% H<sub>2</sub>O<sub>2</sub> for 20 min (B), using Ab (R0014-1) at RT for 2 h.