



Order: (888)-282-5810 (Phone)  
(818)-707-0392 (Fax)  
[order@abiocode.com](mailto:order@abiocode.com)  
Web: [www.Abiocode.com](http://www.Abiocode.com)

---

## **ING1 (M1) Antibody, Rabbit Polyclonal**

**Cat#: R0115-1**

**Quantity: 100 ul**

**Predicted M.W.: 47 kDa**

**Lot#: Refer to vial**

**Application: WB**

**Uniprot ID: Q9UK53**

### **Background:**

Inhibitor of growth protein 1 (ING1) cooperates with p53/TP53 in the negative regulatory pathway of cell growth by modulating p53-dependent transcriptional activation. ING1 has been implicated as a tumor suppressor. Reduced expression and rearrangement of the *ING1* gene have been detected in various cancers. Multiple alternatively spliced transcript variants of ING1 encoding distinct isoforms have been reported. ING1 (M1) antibody (R0115-1) specifically detects approximately 30 kD ING1 isoforms.

### **Other Names:**

Inhibitor of growth protein 1, ING-1

### **Source and Purity:**

Rabbit polyclonal antibodies were produced by immunizing animals with a GST-fusion protein containing the middle region of human ING1. Antibodies were purified by affinity purification using immunogen.

### **Storage Buffer and Condition:**

Supplied in 1 x PBS (pH 7.4), 100 ug/ml BSA, 40% Glycerol, 0.01% NaN<sub>3</sub>. Store at -20 °C. Stable for 6 months from date of receipt.

### **Species Specificity:**

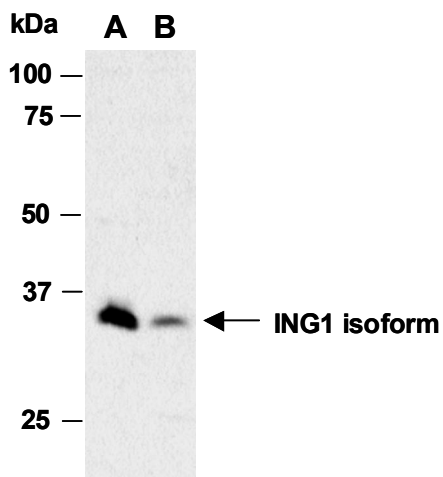
Human

### **Tested Applications:**

WB: 1:1,000-1:5,000 (detect endogenous protein\*)

\*: The apparent protein size on WB may be different from the calculated M.W. due to modifications.

**Product Data:**



**Fig 1.** Western blot of whole cell extract from (A) human HeLa, (B) human MCF7, using Ab (R0115-1) at RT for 2 h.