



Order: (888)-282-5810 (Phone)
(818)-707-0392 (Fax)
order@abiocode.com
Web: www.Abiocode.com

BMI1 (C) Antibody, Rabbit Polyclonal

Cat#: R0116-1

Quantity: 100 ul

Predicted M.W.: 37 kDa

Lot#: Refer to vial

Application: WB

Uniprot ID: P35226

Background:

BMI1 is a component of the Polycomb group (PcG) multiprotein PRC1 complex, a complex required to maintain the transcriptionally repressive state of many genes, including Hox genes, throughout development. PcG PRC1 complex acts via chromatin remodeling and modification of histones; it mediates monoubiquitination of histone H2A 'Lys-119', rendering chromatin heritably changed in its expressibility. In the PRC1 complex, BMI1 is required to stimulate the E3 ubiquitin-protein ligase activity of RNF2/RING2.

Other Names:

BMI-1, Bmi-1, PCGF4, RNF51, Polycomb group RING finger protein 4, RING finger protein 51

Source and Purity:

Rabbit polyclonal antibodies were produced by immunizing animals with a GST-fusion protein containing the C-terminal region of human BMI1. Antibodies were purified by affinity purification using immunogen.

Storage Buffer and Condition:

Supplied in 1 x PBS (pH 7.4), 100 ug/ml BSA, 40% Glycerol, 0.01% NaN₃. Store at -20 °C. Stable for 6 months from date of receipt.

Species Specificity:

Human, Mouse

Tested Applications:

WB: 1:1,000-1:5,000 (detect endogenous protein*)

*: The apparent protein size on WB may be different from the calculated M.W. due to modifications.

Product Data:

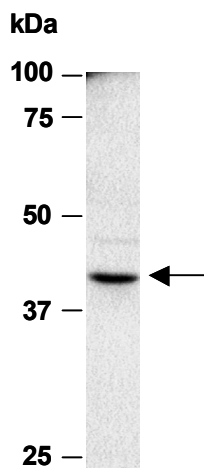


Fig 1. Western blot of whole cell extract from mouse brain, using Ab (R0116-1) at RT for 2 h.