



Order: (888)-282-5810 (Phone)
(818)-707-0392 (Fax)
order@abiocode.com
Web: www.Abiocode.com

ATF2 (C) Antibody, Rabbit Polyclonal

Cat#: R0104-1

Quantity: 100 ul

Predicted M.W.: 55 kDa

Lot#: Refer to vial

Application: WB

Uniprot ID: P15336

Background:

Activating transcription factor 2 (ATF2) is a member of the leucine zipper family of DNA binding proteins. It binds to the cAMP-responsive element (CRE), which is an octameric palindrome. It has the ability to form a homodimer or a heterodimer with c-Jun and stimulate CRE-dependent transcription. ATF2 is also a histone acetyltransferase that specifically acetylates histones H2B and H4 in vitro, therefore it may represent a class of sequence-specific factors that activate transcription by direct effects on chromatin components.

Other Names:

Cyclic AMP-dependent transcription factor ATF 2, Activating transcription factor 2, Cyclic AMP-responsive element-binding protein 2, CRE-BP1, CREB2, HB16, MGC111558, TREB7

Source and Purity:

Rabbit polyclonal antibodies were produced by immunizing animals with a GST-fusion protein containing the C-terminal region of human ATF2. Antibodies were purified by affinity purification using immunogen.

Storage Buffer and Condition:

Supplied in 1 x PBS (pH 7.4), 100 ug/ml BSA, 40% Glycerol, 0.01% NaN₃. Store at -20 °C. Stable for 6 months from date of receipt.

Species Specificity:

Human

Tested Applications:

WB: 1:1,000-1:5,000 (detect endogenous protein*)

*: The apparent protein size on WB may be different from the calculated M.W. due to modifications.

Product Data:

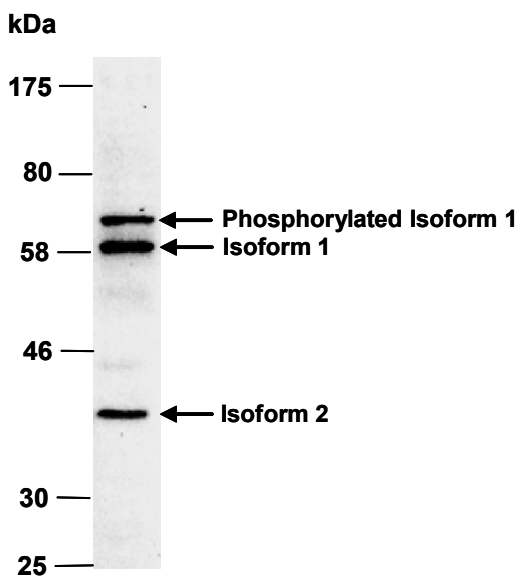


Fig 1. Western blot of total cell extracts from human HeLa, using Ab (R0104-1) at RT for 2 h.