



Order: (888)-282-5810 (Phone)
(818)-707-0392 (Fax)
order@abiocode.com
Web: www.Abiocode.com

MMP13 (N) Antibody, Rabbit Polyclonal

Cat#: R0092-1

Quantity: 100 ug

Predicted M.W.: 54 kDa

Lot#: Refer to vial

Application: WB, ELISA

Uniprot ID: P45452

Background:

Matrix metalloproteinase 13 (collagenase 3) (MMP13) is a zinc-dependent endopeptidase that belongs to the matrix metalloproteinase (MMP) family. Members of the MMP family are involved in the breakdown of extracellular matrix in normal physiological processes, such as embryonic development, reproduction, migration and tissue remodeling. MMP13 has been implicated in disease progressions, including arthritis, chronic ulcers and metastasis. Most MMPs are secreted as zymogens requiring activation by an extracellular proteinase. MMP13 cleaves type II collagen more efficiently than types I and III. It may play a role in articular cartilage turnover and cartilage pathophysiology associated with osteoarthritis.

Other Names:

CLG3, MANDP1

Source and Purity:

Rabbit polyclonal antibodies were produced by immunizing animals with a GST-fusion protein containing the N-terminal propeptide region of human MMP13. Antibodies were purified by affinity purification using immunogen.

Storage Buffer and Condition:

Supplied in 1 x PBS (pH 7.4), 100 ug/ml BSA, 40% Glycerol, 0.01% NaN₃. Store at -20 °C. Stable for 6 months from date of receipt.

Species Specificity:

Human

Tested Applications:

WB: 1:1,000-1:5,000 (detect endogenous protein*)

ELISA: 1:1,000- 1:10,000 (detect native recombinant protein in a direct ELISA assay).
Suitable for using as ELISA capture or detection antibodies.

*: The apparent protein size on WB may be different from the calculated M.W. due to modifications.

Product Data:

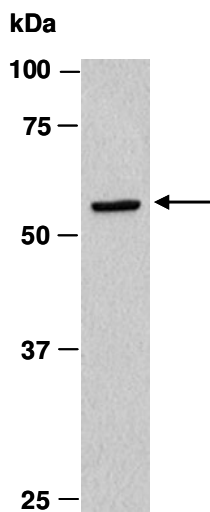


Fig 1. Western blot of total cell extracts from human Jurkat, using Ab (R0092-1) at RT for 2 h.