



Order: (888)-282-5810 (Phone)
(818)-707-0392 (Fax)
order@abiocode.com
Web: www.Abiocode.com

SMARCE1 (N) Antibody, Rabbit Polyclonal

Cat#: R0127-1

Quantity: 100 ul

Predicted M.W.: 47 kDa

Lot#: Refer to vial

Application: WB

Uniprot ID: Q969G3

Background:

SWI/SNF related, matrix associated, actin dependent regulator of chromatin subfamily e, member 1 (SMARCE1) is a member of the SWI/SNF family of proteins. It has the ability to bind to 4-way junction DNA, which is thought to mimic the topology of DNA as it enters or exits the nucleosome. It belongs to the neuronal progenitors-specific chromatin remodeling complex and the neuron-specific chromatin remodeling complex.

Other Names:

BRG1-associated factor 57, BAF57, FLJ35648

Source and Purity:

Rabbit polyclonal antibodies were produced by immunizing animals with a GST-fusion protein containing the N-terminal region of human SMARCE1. Antibodies were purified by affinity purification using immunogen.

Storage Buffer and Condition:

Supplied in 1 x PBS (pH 7.4), 100 ug/ml BSA, 40% Glycerol, 0.01% NaN₃. Store at -20 °C. Stable for 6 months from date of receipt.

Species Specificity:

Human

Tested Applications:

WB: 1:1,000-1:5,000 (detect endogenous protein*)

*: The apparent size of SMARCE1 protein on WB has been reported to be around 57 kDa.

Product Data:

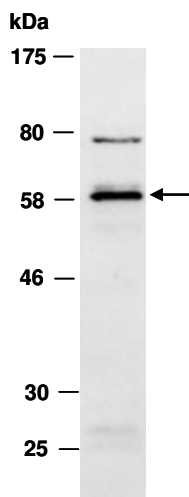


Fig 1. Western blot of total cell extracts from human HeLa, using Ab (R0127-1) at RT for 2 h.