



Order: (888)- 282-5810 (Phone)
(818)-707-0392 (Fax)
order@abiocode.com
Web: www.Abiocode.com

HELLS (vPair™) Antibodies

Cat#: R0031-vp

Lot#: Refer to vial

Predicted M.W.: 97 kDa

Uniprot ID: Q9NRZ9

Application: WB

Quantity: 50 ul HELLS (N) (R0031-1) Rabbit Polyclonal Antibody &
50 ul HELLS (C) (R0031-2) Rabbit Polyclonal Antibody

Product Introduction:

vPair™ antibodies represent a pair of fully characterized antibodies that recognize two different regions of a target protein. The product is developed by Abiocode to address whether the signal observed truly represents the protein of interest, an often encountered issue in antibody-based assays. The use of a pair of fully characterized vPair™ antibodies in the same assay can validate signal specificity since vPair™ antibodies recognize two independent epitopes of the same protein. Different sets of vPair™ antibodies are developed at Abiocode to work with specific applications, including antibody arrays, Western blot, IP-Western, ChIP, IHC, and FACS.

Background:

Lymphoid-specific helicase (HELLS) plays an essential role in normal development and cell survival. It is involved in the regulation of the expansion and survival of lymphoid cells. HELLS is required for de novo and maintenance of DNA methylation.

Other Names:

LSH, PASG, SMARCA6, FLJ10339, Nbla10143

Source and Purity:

Rabbit polyclonal antibodies were produced by immunizing animals with a GST-fusion protein containing either the N-terminal [HELLS (N) (R0031-1)] or the C-terminal region [HELLS (C) of human HELLS]. Antibodies were purified by affinity purification using immunogen.

Storage Buffer and Condition:

Supplied in 1 x PBS (pH 7.4), 100 ug/ml BSA, 40% Glycerol, 0.01% NaN₃. Store at -20 °C. Stable for 6 months from date of receipt.

For research use only. Not for therapeutic or diagnostic purposes.
Abiocode, Inc., 29397 Agoura Rd., Ste 106, Agoura Hills, CA 91301

Species Specificity:

Human

Tested Applications:

WB: 1:1,000-1:5,000 (detect endogenous protein*)

*: The apparent protein size on WB may be different from the calculated M.W. due to modifications.

Product Data:

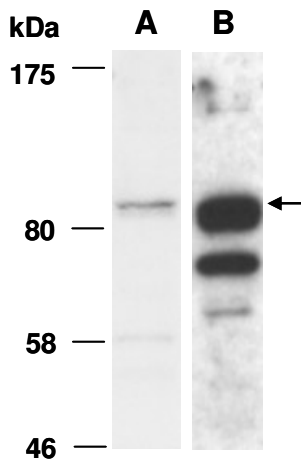


Fig 1. Western blot of total cell extracts from human HeLa, using Abs (A:R0031-1; B: R0031-2) at RT for 2 h.