



Order: (888)-282-5810 (Phone)
(818)-707-0392 (Fax)
order@abiocode.com
Web: www.Abiocode.com

MFGE8 (C) Antibody, Rabbit Polyclonal

Cat#: R0134-1

Lot#: Refer to vial

Quantity: 100 ul

Application: WB

Predicted M.W.: 43 kDa

Uniprot ID: Q08431

Background:

Milk fat globule-EGF factor 8 protein (MFGE8) plays a role in the maintenance of intestinal epithelial homeostasis and the promotion of mucosal healing. It is thought to promote VEGF-dependent neovascularization. It is a ligand for integrins alpha-v/beta-3 and alpha-v/beta-5. It binds specifically to rotavirus and inhibits its replication. It also binds to phosphatidylserine-enriched cell surfaces in a receptor-independent manner. In many tissues MFGE8 contributes to phagocytic removal of apoptotic cells.

Other Names:

Lactadherin, Breast epithelial antigen BA46, HMFG, MFGM, SED1, hP47, EDIL1, MFG-E8, SPAG10, OAcGD3S, HsT19888

Source and Purity:

Rabbit polyclonal antibodies were produced by immunizing animals with a GST-fusion protein containing the C-terminal region of human MFGE8. Antibodies were purified by affinity purification using immunogen.

Storage Buffer and Condition:

Supplied in 1 x PBS (pH 7.4), 100 ug/ml BSA, 40% Glycerol, 0.01% NaN₃. Store at -20 °C. Stable for 6 months from date of receipt.

Species Specificity:

Human, Mouse

Tested Applications:

WB: 1:1,000-1:5,000 (detect endogenous protein*)

*: The apparent protein size on WB may be different from the calculated M.W. due to modifications.

Product Data:

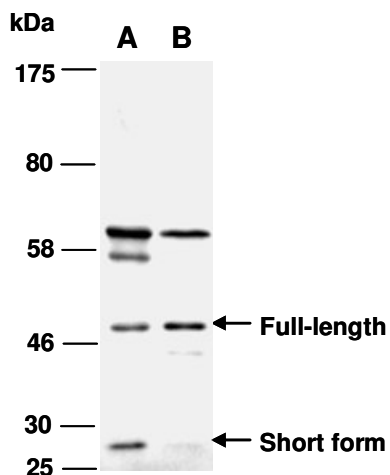


Fig 1. Western blot of total cell extracts from (A) human MCF7, (B) mouse mammary gland, using Ab (R0134-1) at RT for 2 h.