



Order: (888)-282-5810 (Phone)
(818)-707-0392 (Fax)
order@abiocode.com
Web: www.Abiocode.com

MMP14 (vPair™) Antibodies

Cat#: R0139-vp

Lot#: Refer to vial

Predicted M.W.: 66 kDa

Uniprot ID: P50281

Application: WB

Quantity: 50 ul MMP14 (M) (R0139-1) Rabbit Polyclonal Antibody &
50 ul MMP14 (C) (R0139-2) Rabbit Polyclonal Antibody

Background:

Matrix metalloproteinase 14 (MMP14) is a zinc-dependent endopeptidase that belongs to the membrane-type matrix metalloproteinase (MT-MMP) subfamily. Members of the MMP family are involved in the breakdown of extracellular matrix in normal physiological processes, such as embryonic development, reproduction, migration and tissue remodeling. Most MMPs are secreted as zymogens requiring activation by an extracellular proteinase. MMP14, along with other MT-MMPs contains a potential transmembrane domain suggesting that they are not secreted but expressed at the cell surface. MMP14 cleaves and activates MMP2, which may play a role in tumor invasion.

Other Names:

Membrane-type-1 matrix metalloproteinase, MT1-MMP, MT1MMP, Membrane type matrix metalloproteinase 1, MT-MMP 1, MTMMP1, MMP-X1, MMP-14

Source and Purity:

Rabbit polyclonal antibodies were produced by immunizing animals with a GST-fusion protein containing either the middle region [MMP14 (M) (R0139-1)] or the C-terminal region [MMP14 (C) (R0139-2)] of human MMP14. Antibodies were purified by affinity purification using immunogen.

Storage Buffer and Condition:

Supplied in 1 x PBS (pH 7.4), 100 ug/ml BSA, 40% Glycerol, 0.01% NaN₃. Store at -20 °C. Stable for 6 months from date of receipt.

Species Specificity:

Human

Tested Applications:

WB: 1:1,000-1:5,000 (detect endogenous protein*)

*: The apparent protein size on WB may be different from the calculated M.W. due to modifications.

Product Data:

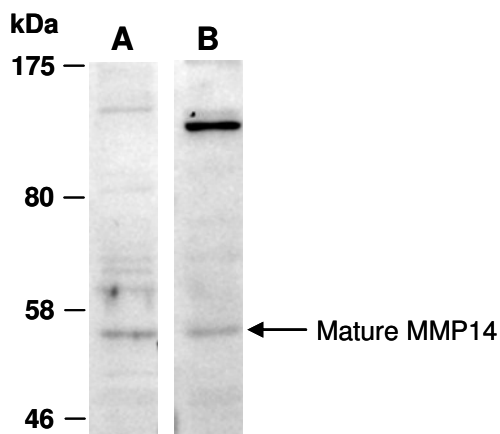


Fig 1. Western blot of total cell extracts from human HeLa, using Abs (A) R0139-1, (B) R0139-2 at RT for 2 h.