



Order: (888)- 282-5810 (Phone)  
(818)-707-0392 (Fax)  
[order@abiocode.com](mailto:order@abiocode.com)  
Web: [www.Abiocode.com](http://www.Abiocode.com)

---

## **SERPINB5 (N1) Antibody, Rabbit Polyclonal**

**Cat#:** R0003-2

**Quantity:** 100 ul

**Predicted M.W.:** 42 kDa

**Lot#:** Refer to vial

**Application:** WB

**Uniprot ID:** P36952

### **Background:**

SERPINB5 is a tumor suppressor known to block the growth, invasion and metastatic properties of mammary tumors. It has also been implicated in prostate and pancreatic cancer. While SERPINB5 belongs to the SERPIN family of protease inhibitors, it does not undergo the S (stressed) and R (relaxed) conformational transitions; therefore, it may not function as a serine protease inhibitor.

### **Other Names:**

Serpin B5, Maspin, Peptidase inhibitor 5, PI-5

### **Source and Purity:**

Rabbit polyclonal antibodies were produced by immunizing animals with a GST-fusion protein containing the N-terminal region of human SERPINB5. Antibodies were purified by affinity purification using immunogen.

### **Storage Buffer and Condition:**

Supplied in 1 x PBS (pH 7.4), 100 ug/ml BSA, 40% Glycerol, 0.01% NaN<sub>3</sub>. Store at -20 °C. Stable for 12 months from date of receipt.

### **Species Specificity:**

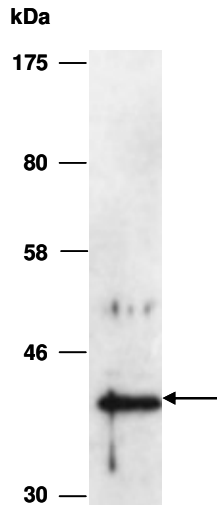
Human

### **Tested Applications:**

WB: 1:1,000-1:5,000 (detect endogenous protein\*)

\*: The apparent protein size on WB may be different from the calculated M.W. due to modifications.

**Product Data:**



**Fig 1.** Western blot of total cell extracts from human Hela cells, using Ab (R0003-2) at RT for 2 h.