



Order: (888)- 282-5810 (Phone)
(818)-707-0392 (Fax)
order@abiocode.com
Web: www.Abiocode.com

SERPINB5 (vPair™) Antibodies

Cat#: R0003-vp

Lot#: Refer to vial

Predicted M.W.: 42 kDa

Uniprot ID: P36952

Application: WB

Quantity: 50 ul SERLINB5 (N3) (R0003-1) Rabbit Polyclonal Antibody &
50 ul SERPINB5 (N1) (R0003-2) Rabbit Polyclonal Antibody

Product Introduction:

vPair™ antibodies represent a pair of fully characterized antibodies that recognize two different regions of a target protein. The product is developed by Abiocode to address whether the signal observed truly represents the protein of interest, an often encountered issue in antibody-based assays. The use of a pair of fully characterized vPair™ antibodies in the same assay can validate signal specificity since vPair™ antibodies recognize two independent epitopes of the same protein. Different sets of vPair™ antibodies are developed at Abiocode to work with specific applications, including antibody arrays, Western blot, IP-Western, ChIP, IHC, and FACS.

Background:

SERPINB5 is a tumor suppressor known to block the growth, invasion and metastatic properties of mammary tumors. It has also been implicated in prostate and pancreatic cancer. While SERPINB5 belongs to the SERPIN family of protease inhibitors, it does not undergo the S (stressed) and R (relaxed) conformational transitions; therefore, it may not function as a serine protease inhibitor.

Other Names:

Serpin B5, Maspin, Peptidase inhibitor 5, PI-5

Source and Purity:

Rabbit polyclonal antibodies were produced by immunizing animals with a GST-fusion protein containing two distinct N-terminal regions of human SERPINB5. Antibodies were purified by affinity purification using immunogen.

Storage Buffer and Condition:

Supplied in 1 x PBS (pH 7.4), 100 ug/ml BSA, 40% Glycerol, 0.01% NaN₃. Store at -20 °C. Stable for 12 months from date of receipt.

For research use only. Not for therapeutic or diagnostic purposes.
Abiocode, Inc., 29397 Agoura Rd., Ste 106, Agoura Hills, CA 91301

Species Specificity:

Human

Tested Applications:

WB: 1:1,000-1:5,000 (detect endogenous protein*)

*: The apparent protein size on WB may be different from the calculated M.W. due to modifications.

Product Data:

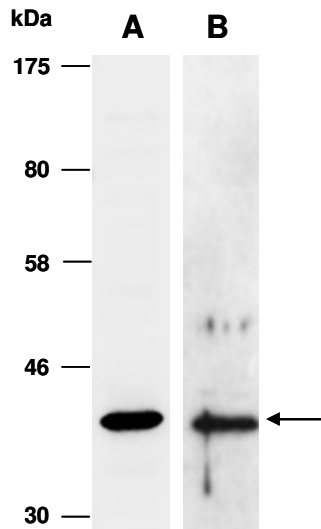


Fig 1. Western blot of total cell extracts from human HeLa cells, using Abs (A: R0003-1; B: R0003-2) at RT for 2 h.