



Order: (888)-282-5810 (Phone)  
(818)-707-0392 (Fax)  
[order@abiocode.com](mailto:order@abiocode.com)  
Web: [www.Abiocode.com](http://www.Abiocode.com)

---

## **IL17F (N) Antibody, Rabbit Polyclonal**

**Cat#: R0129-1**

**Quantity: 100 ug**

**Predicted M.W.: 18 kDa**

**Lot#: Refer to vial**

**Application: WB, ELISA**

**Uniprot ID: Q96PD4**

### **Background:**

Interleukin 17F (IL17F) is a cytokine expressed by activated T cells that stimulates the production of other cytokines, including IL6 and IL8 and granulocyte colony stimulating factor. It can also regulate cartilage matrix turnover. It has been found to inhibit the angiogenesis of endothelial cells and induce endothelial cells to produce IL2, TGFB1/TGFB, and monocyte chemoattractant protein-1.

### **Other Names:**

IL-17F, Cytokine ML-1, ML1, Interleukin-24, IL-24, IL24

### **Source and Purity:**

Rabbit polyclonal antibodies were produced by immunizing animals with a GST-fusion protein containing the N-terminal region of human IL17A. Antibodies were purified by affinity purification using immunogen.

### **Storage Buffer and Condition:**

Supplied in 1 x PBS (pH 7.4), 100 ug/ml BSA, 40% Glycerol, 0.01% NaN<sub>3</sub>. Store at -20 °C. Stable for 6 months from date of receipt.

### **Species Specificity:**

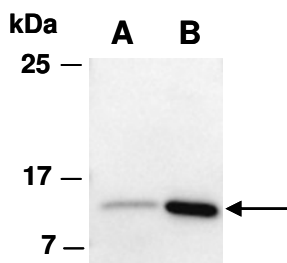
Human

### **Tested Applications:**

WB: 1:1,000-1:5,000 (detect recombinant protein)

ELISA: 1:1,000- 1:10,000 (detect native recombinant protein in a direct ELISA assay).  
Suitable for using as ELISA capture or detection antibodies.

**Product Data:**



**Fig 1.** Western blot of recombinant human IL17F protein (A: 10ng, B: 60 ng), using Ab (R0129-1) at RT for 2 h.