



Order: (888)-282-5810 (Phone)
(818)-707-0392 (Fax)
order@abiocode.com
Web: www.Abiocode.com

IL25 (vPair™) Antibodies

Cat#: R0068-vp

Lot#: Refer to vial

Predicted M.W.: 20 kDa

Uniprot ID: Q9H293

Application: WB, ELISA

Quantity: 50 ug IL25 (N) (R0068-1) Rabbit Polyclonal Antibody &
50 ug IL25 (C) (R0068-2) Rabbit Polyclonal Antibody

Product Introduction:

vPair™ antibodies represent a pair of fully characterized antibodies that recognize two different regions of a target protein. The product is developed by Abiocode to address whether the signal observed truly represents the protein of interest, an often encountered issue in antibody-based assays. The use of a pair of fully characterized vPair™ antibodies in the same assay can validate signal specificity since vPair™ antibodies recognize two independent epitopes of the same protein. Different sets of vPair™ antibodies are developed at Abiocode to work with specific applications, including antibody arrays, Western blot, IP-Western, CHIP, IHC, and FACS.

Background:

Interleukin 25 (IL25) is a cytokine that induces activation of NF-kappa-B and stimulates the production of the proinflammatory chemokine interleukin 8. IL25 shares sequence similarity with interleukin 17. It may be a proinflammatory cytokine favoring Th2-type immune response. IL25 along with interleukin 17B are ligands for the cytokine receptor IL17BR

Other Names:

UNQ312/PRO10272, IL17E

Source and Purity:

Rabbit polyclonal antibodies were produced by immunizing animals with a GST-fusion protein containing either the N-terminal [IL25 (N) (R0068-1)] or the C-terminal [IL25 (C) (R0068-2)] region of human IL25. Antibodies were purified by affinity purification using immunogen.

Storage Buffer and Condition:

Supplied in 1 x PBS (pH 7.4), 100 ug/ml BSA, 40% Glycerol, 0.01% NaN₃. Store at -20 °C. Stable for 6 months from date of receipt.

Species Specificity:

Human

Tested Applications:

WB: 1:1,000-1:5,000 (detect recombinant protein)

ELISA: 1:1,000 – 1:10,000 (detect native recombinant protein in a direct ELISA assay)
Suitable for using as ELISA capture or detection antibodies.

Product Data:

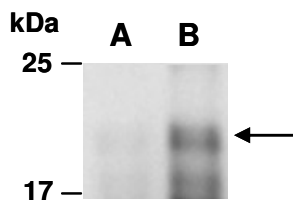


Fig 1. Western blot of recombinant human IL-25 protein (A: 10ng, B: 60 ng), using Ab (R0068-1) at RT for 2 h.