



Order: (888)-282-5810 (Phone)
(818)-707-0392 (Fax)
order@abiocode.com
Web: www.Abiocode.com

CCL20 (N) Antibody, Rabbit Polyclonal

Cat#: R0141-1

Quantity: 100 ug

Predicted M.W.: 11 kDa

Lot#: Refer to vial

Application: ELISA, WB

Uniprot ID: O89093

Background:

Chemokine (C-C motif) ligand 20 (CCL20) is a member of the subfamily of small cytokine CC genes characterized by two adjacent cysteine residues. It is a chemotactic factor that attracts lymphocytes and neutrophils but not monocytes. In colony formation assays it inhibits proliferation of myeloid progenitor cells. C-terminal processed forms lacking 1, 3 or 6 amino acids have been shown to be equally chemotactically active for leukocytes.

Other Names:

CKb4, LARC, MIP-3A, MIP-3[a], MIP3A, ST38, Scya20, exodus-1, Beta-chemokine exodus-1, CC chemokine LARC, CC chemokine ST38, Liver and activation-regulated chemokine, Macrophage inflammatory protein 3 alpha, MIP-3-alpha, small-inducible cytokine A20

Source and Purity:

Rabbit polyclonal antibodies were produced by immunizing animals with a GST-fusion protein containing the N-terminal region of mouse CCL20. Antibodies were purified by affinity purification using immunogen.

Storage Buffer and Condition:

Supplied in 1 x PBS (pH 7.4), 100 ug/ml BSA, 40% Glycerol, 0.01% NaN₃. Store at -20 °C. Stable for 6 months from date of receipt.

Species Specificity:

Mouse

Tested Applications:

WB: 1:1,000-1:5,000 (detect recombinant protein)

ELISA: 1:1,000- 1:10,000 (detect native recombinant protein in a direct ELISA assay).
Suitable for using as ELISA capture or detection antibodies.

Product Data:

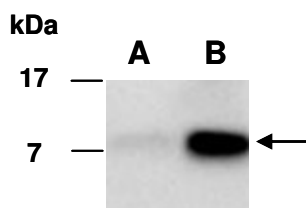


Fig 1. Western blot of the recombinant mouse CCL20 protein (A: 10 ng, B: 60 ng), using Ab (R0141-1) at RT for 2 h.