



Order: (888)-282-5810 (Phone)
(818)-707-0392 (Fax)
order@abiocode.com
Web: www.Abiocode.com

KITL (C) Antibody, Rabbit Polyclonal

Cat#: R0143-1

Quantity: 100 ug

Predicted M.W.: 31 kDa

Lot#: Refer to vial

Application: ELISA, WB

Uniprot ID: P21583

Background:

KIT ligand (KITL) is the binding partner of the tyrosine-kinase receptor KIT. KITL is a pleiotropic factor that has effects on germ cell and neural cell development and hematopoiesis. It also stimulates the proliferation of mast cells. It is thought to play a role in cell migration and cell-cell adhesions.

Other Names:

KITLG, FPH2, KL-1, MGF, SCF, SF, SHEP7, DKFZp686F2250, Mast cell growth factor, Stem cell factor, c-Kit ligand

Source and Purity:

Rabbit polyclonal antibodies were produced by immunizing animals with a GST-fusion protein containing the C-terminal region of human KITL. Antibodies were purified by affinity purification using immunogen.

Storage Buffer and Condition:

Supplied in 1 x PBS (pH 7.4), 100 ug/ml BSA, 40% Glycerol, 0.01% NaN₃. Store at -20 °C. Stable for 6 months from date of receipt.

Species Specificity:

Human

Tested Applications:

WB: 1:1,000-1:5,000 (detect recombinant protein)

ELISA: 1:1,000- 1:10,000 (detect native recombinant protein in a direct ELISA assay).
Suitable for using as ELISA capture or detection antibodies.

Product Data:

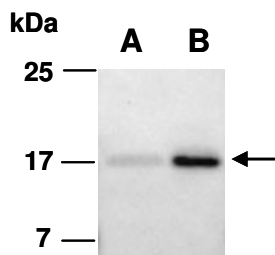


Fig 1. Western blot of the recombinant human KITL protein (A: 10 ng, B: 60 ng), using Ab (R0143-1) at RT for 2 h.