



Order: (888)-282-5810 (Phone)
(818)-707-0392 (Fax)
order@abiocode.com
Web: www.Abiocode.com

KRT7 (N) Antibody, Rabbit Polyclonal

Cat#: R0146-1

Quantity: 100 ul

Predicted M.W.: 51 kDa

Lot#: Refer to vial

Application: WB

Uniprot ID: P08729

Background:

Keratin 7 (KRT7) is a member of the keratin family. Keratins are intermediate filament proteins in charge of maintaining the structural integrity of epithelial cells. They are subdivided into cytokeratins and hair keratins. The type II cytokeratins consist of basic or neutral proteins which are arranged in pairs of heterotypic keratin chains coexpressed during differentiation of simple and stratified epithelial tissues. KRT7 is expressed in the simple epithelie, such as the lining of the cavities of internal organs. It blocks the interferon-dependent interphase and stimulates DNA synthesis in cells. It also plays a role in the translational regulation of the human papillomavirus type 16 E7 mRNA.

Other Names:

CK7, CK-7, K7, K2C7, MGC129731, MGC3625, SCL, Cytokeratin-7, Keratin type II cytoskeletal 7, Sarcolectin, Type-II keratin Kb7

Source and Purity:

Rabbit polyclonal antibodies were produced by immunizing animals with a GST-fusion protein containing the N-terminal region of human KRT7. Antibodies were purified by affinity purification using immunogen.

Storage Buffer and Condition:

Supplied in 1 x PBS (pH 7.4), 100 ug/ml BSA, 40% Glycerol, 0.01% NaN₃. Store at -20 °C. Stable for 6 months from date of receipt.

Species Specificity:

Human

Tested Applications:

WB: 1:1,000-1:5,000 (detect endogenous protein*)

*: The apparent protein size on WB may be different from the calculated M.W. due to modifications.

Product Data:

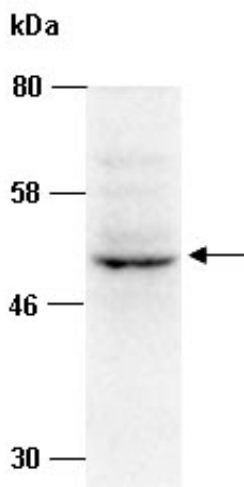


Fig 1. Western blot of total cell extracts from human HeLa, using Ab (R0146-1) at RT for 2 h.