



Order: (888)-282-5810 (Phone)
(818)-707-0392 (Fax)
order@abiocode.com
Web: www.Abiocode.com

SYP (vPair™) Antibodies

Cat#: R0152-vp

Lot#: Refer to vial

Predicted M.W.: 34 kDa

Uniprot ID: P08247

Application: WB

Quantity: 50 ul SYP (C) (R0152-1) Rabbit Polyclonal Antibody &
50 ul SYP (M) (R0152-2) Rabbit Polyclonal Antibody

Product Introduction:

vPair™ antibodies represent a pair of fully characterized antibodies that recognize two different regions of a target protein. The product is developed by Abiocode to address whether the signal observed truly represents the protein of interest, an often encountered issue in antibody-based assays. The use of a pair of fully characterized vPair™ antibodies in the same assay can validate signal specificity since vPair™ antibodies recognize two independent epitopes of the same protein. Different sets of vPair™ antibodies are developed at Abiocode to work with specific applications, including antibody arrays, Western blot, IP-Western, ChIP, IHC, and FACS.

Background:

Synaptophysin (SYP) is an integral membrane protein of small synaptic vesicles in brain and endocrine cells. It is possibly involved in structural functions as organizing other membrane components or in targeting the vesicles to the plasma membrane. Defects in SYP are the cause of mental retardation X-linked SYP-related (MRXSYP).

Other Names:

MRXSYP, Major synaptic vesicle protein p38

Source and Purity:

Rabbit polyclonal antibodies were produced by immunizing animals with a GST-fusion protein containing either the C-terminal [SYP (C) (R0152-1)] or the middle region [SYP (M) (R0152-2)] of human FANCI. Antibodies were purified by affinity purification using immunogen.

Storage Buffer and Condition:

Supplied in 1 x PBS (pH 7.4), 100 ug/ml BSA, 40% Glycerol, 0.01% NaN₃. Store at -20 °C. Stable for 6 months from date of receipt.

For research use only. Not for therapeutic or diagnostic purposes.
Abiocode, Inc., 29397 Agoura Rd., Ste 106, Agoura Hills, CA 91301

Species Specificity:

Human, mouse

Tested Applications:

WB: 1:1,000-1:5,000 (detect endogenous protein*)

*: The apparent protein size on WB may be different from the calculated M.W. due to modifications.

Product Data:

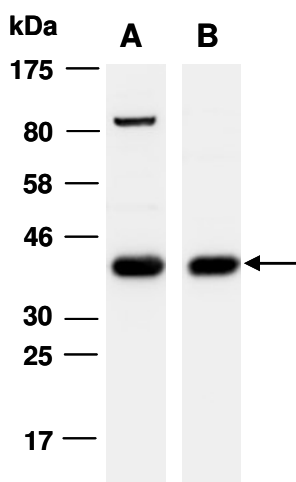


Fig 1. Western blot of total cell extracts from mouse brain, using Ab (A) R0152-1; or (B) R0152-2 at RT for 2 h.