



Order: (888)-282-5810 (Phone)
(818)-707-0392 (Fax)
order@abiocode.com
Web: www.Abiocode.com

SYP (C) Antibody, Rabbit Polyclonal

Cat#: R0152-1

Quantity: 100 ul

Predicted M.W.: 34 kDa

Lot#: Refer to vial

Application: WB

Uniprot ID: P08247

Background:

Synaptophysin (SYP) is an integral membrane protein of small synaptic vesicles in brain and endocrine cells. It is possibly involved in structural functions as organizing other membrane components or in targeting the vesicles to the plasma membrane. Defects in SYP are the cause of mental retardation X-linked SYP-related (MRXSYP).

Other Names:

MRXSYP, Major synaptic vesicle protein p38

Source and Purity:

Rabbit polyclonal antibodies were produced by immunizing animals with a GST-fusion protein containing the C-terminal region of human SYP. Antibodies were purified by affinity purification using immunogen.

Storage Buffer and Condition:

Supplied in 1 x PBS (pH 7.4), 100 ug/ml BSA, 40% Glycerol, 0.01% NaN₃. Store at -20 °C. Stable for 6 months from date of receipt.

Species Specificity:

Human, mouse

Tested Applications:

WB: 1:1,000-1:5,000 (detect endogenous protein*)

*: The apparent protein size on WB may be different from the calculated M.W. due to modifications.

Product Data:

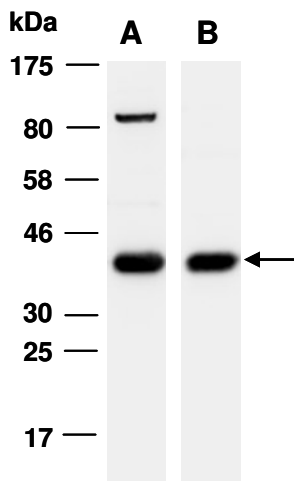


Fig 1. Western blot of total cell extracts from mouse brain, using Ab (A) R0152-1; or (B) R0152-2 at RT for 2 h.