



Order: (888)-282-5810 (Phone)
(818)-707-0392 (Fax)
order@abiocode.com
Web: www.Abiocode.com

SMARCA2 (vPair™) Antibodies

Cat#: R0109-vp

Lot#: Refer to vial

Predicted M.W.: 181 kDa

Uniprot ID: P51531

Application: WB

Quantity: 50 ul SMARCA2 (N) (R0109-1) Rabbit Polyclonal Antibody &
50 ul SMARCA2 (C) (R0109-2) Rabbit Polyclonal Antibody

Product Introduction:

vPair™ antibodies represent a pair of fully characterized antibodies that recognize two different regions of a target protein. The product is developed by Abiocode to address whether the signal observed truly represents the protein of interest, an often encountered issue in antibody-based assays. The use of a pair of fully characterized vPair™ antibodies in the same assay can validate signal specificity since vPair™ antibodies recognize two independent epitopes of the same protein. Different sets of vPair™ antibodies are developed at Abiocode to work with specific applications, including antibody arrays, Western blot, IP-Western, ChIP, IHC, and FACS.

Background:

SWI/SNF related, matrix associated, actin dependent regulator of chromatin subfamily a, member 2 (SMARCA2) is a member of the SWI/SNF family of proteins. It is a transcriptional co-activator cooperating with nuclear hormone receptors to potentiate transcriptional activation. It is also involved in vitamin D-coupled transcription regulation. SMARCA2 is similar to the Drosophila protein Brahma.

Other Names:

Probable global transcription activator SNF2L2, ATP-dependent helicase SMARCA2, BRG1-associated factor 190B, BAF190B, BAF190, Protein brahma homolog, hBRM, SNF2-alpha, SNF2A, SNF2LA, SNF2L2, FLJ36757, MGC74511, SWI2, Sth1p, hSNF, BRM

Source and Purity:

Rabbit polyclonal antibodies were produced by immunizing animals with a GST-fusion protein containing either the N-terminal [SMARCA2 (N) (R0109-1)] or the C-terminal region [SMARCA2 (C) (R0109-2)] of human SMARCA2. Antibodies were purified by affinity purification using immunogen.

Storage Buffer and Condition:

Supplied in 1 x PBS (pH 7.4), 100 ug/ml BSA, 40% Glycerol, 0.01% NaN₃. Store at -20 °C. Stable for 6 months from date of receipt.

Species Specificity:

Human

Tested Applications:

WB: 1:1,000-1:5,000 (detect endogenous protein*)

*: The apparent protein size on WB may be different from the calculated M.W. due to modifications.

Product Data:

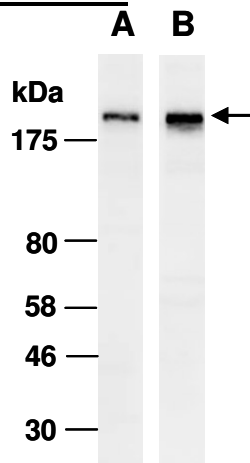


Fig 1. Western blot of total cell extracts from human HeLa, using Ab (A) R0109-1 or (B) R0109-2 at RT for 2 h.