



Order: (888)-282-5810 (Phone)  
(818)-707-0392 (Fax)  
[order@abiocode.com](mailto:order@abiocode.com)  
Web: [www.Abiocode.com](http://www.Abiocode.com)

---

## **ARID1B (N) Antibody, Rabbit Polyclonal**

**Cat#: R0157-1**

**Quantity: 100 ul**

**Predicted M.W.: 236 kDa**

**Lot#: Refer to vial**

**Application: WB**

**Uniprot ID: Q8NFD5**

### **Background:**

AT rich interactive domain 1B (SWI1-like) (ARID1B) belongs to the ARID family of DNA binding proteins. It is involved in transcriptional activation and repression of select genes by chromatin remodeling. It is a member of the neural progenitors-specific chromatin remodeling complex (npBAF complex) and the neuron-specific chromatin remodeling complex (nBAFcomplex).

### **Other Names:**

RP11-419L10.1, 6A3-5, BAF250B, BRIGHT, DAN15, ELD/OSA1, KIAA1235, OSA2, P250R, ARID domain-containing protein 1B, BRG1-associated factor 250b, BRG1-binding protein hELD/OSA1, Osa homolog 2

### **Source and Purity:**

Rabbit polyclonal antibodies were produced by immunizing animals with a GST-fusion protein containing the N-terminal region of human ARID1B. Antibodies were purified by affinity purification using immunogen.

### **Storage Buffer and Condition:**

Supplied in 1 x PBS (pH 7.4), 100 ug/ml BSA, 40% Glycerol, 0.01% NaN<sub>3</sub>. Store at -20 °C. Stable for 6 months from date of receipt.

### **Species Specificity:**

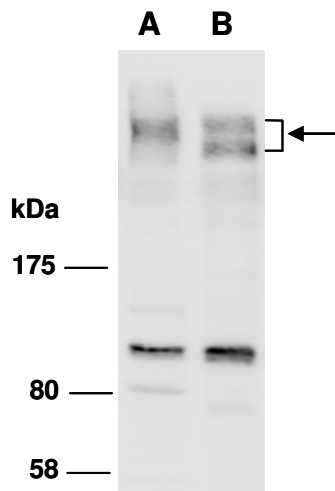
Human, Mouse

### **Tested Applications:**

WB: 1:1,000-1:5,000 (detect endogenous protein\*)

\*: The apparent protein size on WB may be different from the calculated M.W. due to modifications.

**Product Data:**



**Fig 1.** Western blot of total cell extracts from (A) human HeLa and (B) mouse thymus, using Ab (R0157-1) at RT for 2 h.