



Order: (888)-282-5810 (Phone)
(818)-707-0392 (Fax)
order@abiocode.com
Web: www.Abiocode.com

CDH2 (C) Antibody, Rabbit Polyclonal

Cat#: R0105-2

Quantity: 100 ul

Predicted M.W.: 100 kDa

Lot#: Refer to vial

Application: WB

Uniprot ID: P19022

Background:

Cadherin 2, type 1, N-cadherin (neuronal) (CDH2) belongs to the cadherin superfamily, which are calcium dependent cell adhesion molecules. CDH2 has five extracellular cadherin repeats, a transmembrane region and a highly conserved cytoplasmic tail. They preferentially interact with themselves in a hemophilic manner in connecting cells. CDH2 functions during gastrulation and is required for establishment of left-right asymmetry. CDH2 is also involved in certain central nervous system synapses such as presynaptic to postsynaptic adhesions.

Other Names:

CD325, CDHN, CDw325, NCAD, N-cadherin

Source and Purity:

Rabbit polyclonal antibodies were produced by immunizing animals with a GST-fusion protein containing the C-terminal region of human CDH2. Antibodies were purified by affinity purification using immunogen.

Storage Buffer and Condition:

Supplied in 1 x PBS (pH 7.4), 100 ug/ml BSA, 40% Glycerol, 0.01% NaN₃. Store at -20 °C. Stable for 6 months from date of receipt.

Species Specificity:

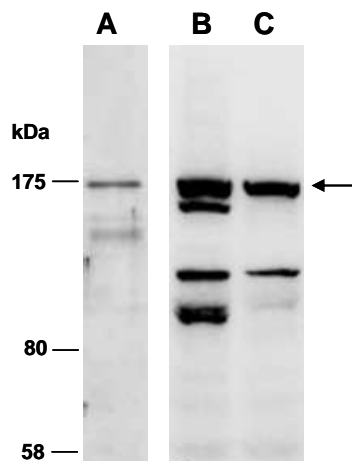
Human

Tested Applications:

WB: 1:1,000-1:5,000 (detect endogenous protein*)

*: The apparent protein size on WB may be different from the calculated M.W. due to modifications.

Product Data:



Ab: R0105-1 R0105-2

Fig 1. Western blot of total cell extracts from human U2OS (A, B) or HeLa (C), using indicated Abs at RT for 2 h.