



Order: (888)-282-5810 (Phone)  
(818)-707-0392 (Fax)  
[order@abiocode.com](mailto:order@abiocode.com)  
Web: [www.Abiocode.com](http://www.Abiocode.com)

---

## SMARCC1 (N) Antibody, Rabbit Polyclonal

**Cat#:** R0179-1

**Quantity:** 100 ul

**Predicted M.W.:** 123 kDa

**Lot#:** Refer to vial

**Application:** WB

**Uniprot ID:** Q92922

### **Background:**

SWI/SNF complex subunit SMARCC1 is a member of the SWI/SNF family proteins, which display helicase and ATPase activities. SMARCC1 is thought to regulate transcription of certain genes by altering the chromatin structure around those genes. SMARCC1 is expressed in brain, heart, muscle, placenta, lung, liver, kidney and pancreas.

### **Other Names:**

BAF155, CRACC1, Rsc8, SRG3, BRG1-associated factor 155, SWI/SNF complex 155 kDa subunit, SWI/SNF-related matrix-associated actin-dependent regulator of chromatin subfamily C member 1

### **Source and Purity:**

Rabbit polyclonal antibodies were produced by immunizing animals with a GST-fusion protein containing the N-terminal region of human SMARCC1. Antibodies were purified by affinity purification using immunogen.

### **Storage Buffer and Condition:**

Supplied in 1 x PBS (pH 7.4), 40% Glycerol, 0.01% NaN<sub>3</sub>. Store at -20 °C. Stable for 6 months from date of receipt.

### **Species Specificity:**

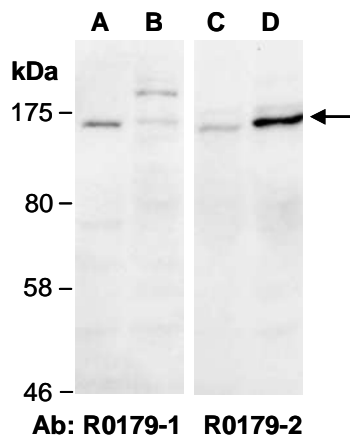
Human, Mouse

### **Tested Applications:**

WB: 1:1,000-1:5,000 (detect endogenous protein\*)

\*: The apparent protein size on WB may be different from the calculated M.W. due to modifications.

**Product Data:**



**Fig 1.** Western blot of total cell extracts from (A,C) human HeLa or (B, D) mouse thymus, using indicated Abs at RT for 2 h.