



Order: (888)-282-5810 (Phone)  
(818)-707-0392 (Fax)  
[order@abiocode.com](mailto:order@abiocode.com)  
Web: [www.Abiocode.com](http://www.Abiocode.com)

---

## **MTA2 (C) Antibody, Rabbit Polyclonal**

**Cat#: R0181-1**

**Quantity: 100 ul**

**Predicted M.W.: 75 kDa**

**Lot#: Refer to vial**

**Application: WB**

**Uniprot ID: Q94776**

### **Background:**

MTA2, metastasis associated 1 family, member 2, is a component of the nucleosome-remodeling and histone-deacetylase multiprotein complex (NuRD). MTA2 interacts with HDAC7, p53/TP53, MINT and MBD3 and may be involved in the regulation of gene expression as repressor and activator. MTA2 is closely related to other members of this family. They indirectly affect transcription by modulating chromatin remodeling. MTA2 is widely expressed in many tissues.

### **Other Names:**

MTA1-L1, MTA1L1, PID, Metastasis-associated 1-like 1, p53 target protein in deacetylase complex

### **Source and Purity:**

Rabbit polyclonal antibodies were produced by immunizing animals with a GST-fusion protein containing the C-terminal region of human MTA2. Antibodies were purified by affinity purification using immunogen.

### **Storage Buffer and Condition:**

Supplied in 1 x PBS (pH 7.4), 40% Glycerol, 0.01% NaN<sub>3</sub>. Store at -20 °C. Stable for 6 months from date of receipt.

### **Species Specificity:**

Human

### **Tested Applications:**

WB: 1:1,000-1:5,000 (detect endogenous protein\*)

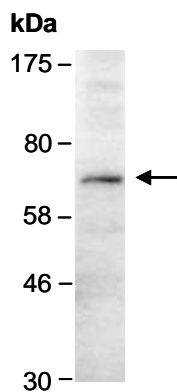
\*: The apparent protein size on WB may be different from the calculated M.W. due to modifications.



Order: (888)-282-5810 (Phone)  
(818)-707-0392 (Fax)  
[order@abiocode.com](mailto:order@abiocode.com)  
Web: [www.Abiocode.com](http://www.Abiocode.com)

---

**Product Data:**



**Fig 1.** Western blot of total cell extracts from human HeLa, using Ab (R0181-1) at RT for 2 h.

---

Last Update: 08/2011

**For research use only. Not for therapeutic or diagnostic purposes.  
Abiocode, Inc., 29397 Agoura Rd., Ste 106, Agoura Hills, CA 91301**