



Order: (888)-282-5810 (Phone)
(818)-707-0392 (Fax)
order@abiocode.com
Web: www.Abiocode.com

XPC (C) Antibody, Rabbit Polyclonal

Cat#: R0178-1

Quantity: 100 ul

Predicted M.W.: 134 kDa

Lot#: Refer to vial

Application: WB

Uniprot ID: Q01831

Background:

XPC, DNA repair protein complementing XP-C cells, is a component of the nucleotide excision repair (NER) pathway. In the early steps of global genome NER, XPC plays an important role in damage recognition, open complex formation, and repair protein complex formation. Defects in XPC cause Xeroderma pigmentosum.

Other Names:

XPCC, RAD4, DNA repair protein complementing XP-C cells, Xeroderma pigmentosum group C-complementing protein, p125

Source and Purity:

Rabbit polyclonal antibodies were produced by immunizing animals with a GST-fusion protein containing the C-terminal region of human XPC. Antibodies were purified by affinity purification using immunogen.

Storage Buffer and Condition:

Supplied in 1 x PBS (pH 7.4), 40% Glycerol, 0.01% NaN₃. Store at -20 °C. Stable for 6 months from date of receipt.

Species Specificity:

Human

Tested Applications:

WB: 1:1,000-1:5,000 (detect endogenous protein*)

*: The apparent protein size on WB may be different from the calculated M.W. due to modifications.



Order: (888)-282-5810 (Phone)
(818)-707-0392 (Fax)
order@abiocode.com
Web: www.Abiocode.com

Product Data:

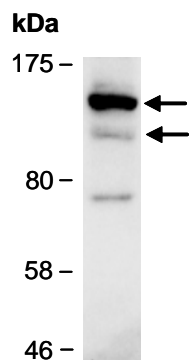


Fig 1. Western blot of total cell extracts from human HeLa, using Ab (R0178-1) at RT for 2 h.

Last Update: 08/2011

For research use only. Not for therapeutic or diagnostic purposes.
Abiocode, Inc., 29397 Agoura Rd., Ste 106, Agoura Hills, CA 91301