



Order: (888)-282-5810 (Phone)
(818)-707-0392 (Fax)
order@abiocode.com
Web: www.Abiocode.com

ATF1 (vPair™) Antibodies

Cat#: R0213-vp

Lot#: Refer to vial

Predicted M.W.: 29 kDa

Uniprot ID: P18846

Application: WB

Quantity: 50 ul ATF1 (N) (R0213-1) Rabbit Polyclonal Antibody &
50 ul ATF1 (C) (R0213-2) Rabbit Polyclonal Antibody

Product Introduction:

vPair™ antibodies represent a pair of fully characterized antibodies that recognize two different regions of a target protein. The product is developed by Abiocode to address whether the signal observed truly represents the protein of interest, an often encountered issue in antibody-based assays. The use of a pair of fully characterized vPair™ antibodies in the same assay can validate signal specificity since vPair™ antibodies recognize two independent epitopes of the same protein. Different sets of vPair™ antibodies are developed at Abiocode to work with specific applications, including antibody arrays, Western blot, IP-Western, ChIP, IHC, and FACS.

Background:

ATF1 is an activating transcription factor, which belongs to the ATF subfamily and bZIP (basic-region leucine zipper) family. It influences cellular physiologic processes by regulating the expression of downstream target genes, which are related to growth, survival and other cellular activities. ATF1 binds the cAMP response element (CRE) (consensus: 5'-GTGACGT[AC][AG]-3'), a sequence present in many viral and cellular promoters. Fusion of ATF1 and FUS on chromosome 16 or EWSR1 on chromosome 22 induced by translocation generates chimeric proteins in angiomatoid fibrous histiocytoma and clear cell sarcoma (provided by RefSeq and Uniprot)

Other Names:

Cyclic AMP-dependent transcription factor ATF-1, cAMP-dependent transcription factor ATF-1, Activating transcription factor 1, Protein TREB36

Source and Purity:

Rabbit polyclonal antibodies were produced by immunizing animals with a GST-fusion protein containing either the N-terminal [ATF1 (N) (R0213-1)] or the C-terminal [ATF1 (C) (R0213-2)] regions of human ATF1. Antibodies were purified by affinity purification using immunogen.

For research use only. Not for therapeutic or diagnostic purposes.
Abiocode, Inc., 29397 Agoura Rd., Ste 106, Agoura Hills, CA 91301



Order: (888)-282-5810 (Phone)
(818)-707-0392 (Fax)
order@abiocode.com
Web: www.Abiocode.com

Storage Buffer and Condition:

Supplied in 1 x PBS (pH 7.4), 100 ug/ml BSA, 40% Glycerol, 0.01% NaN₃. Store at -20 °C. Stable for 6 months from date of receipt.

Species Specificity:

Human

Tested Applications:

WB: 1:1,000-1:5,000 (detect endogenous protein*)

*: The apparent protein size on WB may be different from the calculated M.W. due to modifications.

Product Data:

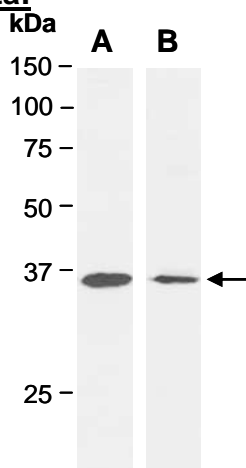


Fig 1. Western blot of total cell extracts from human HeLa, using 2 independent antibodies against 2 distinct regions of human ATF1 [A: R0213-1 (N-terminal); B: R0213-2 (C-terminal)] at RT for 2 h.

Last Update: 08/2011

For research use only. Not for therapeutic or diagnostic purposes.
Abiocode, Inc., 29397 Agoura Rd., Ste 106, Agoura Hills, CA 91301