



Order: (888)-282-5810 (Phone)
(818)-707-0392 (Fax)
order@abiocode.com
Web: www.Abiocode.com

BRCC3 (N) Antibody, Rabbit Polyclonal

Cat#: R0215-1

Quantity: 100 ul

Predicted M.W.: 36 kDa

Lot#: Refer to vial

Application: WB

Uniprot ID: P46736

Background:

BRCC3 is also known as Lys-63-specific deubiquitinase BRCC36, which is a metalloprotease that specifically cleaves 'Lys-63'-linked polyubiquitin chains, while it does not have activity toward 'Lys-48'-linked polyubiquitin chains. BRCC3 is a component of the BRCA1-A complex, a complex that specifically recognizes 'Lys-63'-linked ubiquitinated histones H2A and H2AX at DNA lesions sites, leading to targeting the BRCA1-BARD1 heterodimer to sites of DNA damage at double-strand breaks (DSBs). BRCC3 is thought to be involved in the cellular response to ionizing radiation and progression through the G2/M checkpoint.

Other Names:

Lys-63-specific deubiquitinase BRCC36, BRCA1-A complex subunit BRCC36, BRCA1/BRCA2-containing complex subunit 3, BRCA1/BRCA2-containing complex subunit 36, BRISC complex subunit BRCC36, BRCC36, C6.1A, CXorf53

Source and Purity:

Rabbit polyclonal antibodies were produced by immunizing animals with a GST-fusion protein containing the N-terminal region of human BRCC3. Antibodies were purified by affinity purification using immunogen.

Storage Buffer and Condition:

Supplied in 1 x PBS (pH 7.4), 100 ug/ml BSA, 40% Glycerol, 0.01% NaN₃. Store at -20 °C. Stable for 6 months from date of receipt.

Species Specificity:

Human, Mouse

Tested Applications:

WB: 1:1,000-1:5,000 (detect endogenous protein*)

*: The apparent protein size on WB may be different from the calculated M.W. due to modifications.

Product Data:

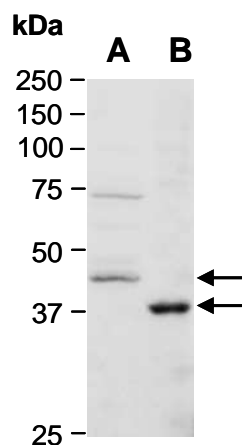


Fig 1. Western blot of total cell extracts from (A) human MCF7, (B) mouse muscle, using Ab (R0215-1) at RT for 2 h.