



Order: (888)-282-5810 (Phone)  
(818)-707-0392 (Fax)  
[order@abiocode.com](mailto:order@abiocode.com)  
Web: [www.Abiocode.com](http://www.Abiocode.com)

---

## **BAD (N) Antibody, Rabbit Polyclonal**

**Cat#: R0221-1**

**Quantity: 100 ul**

**Predicted M.W.: 22 kDa**

**Lot#: Refer to vial**

**Application: WB**

**Uniprot ID: Q61337**

### **Background:**

Bcl2 antagonist of cell death (BAD) promotes cell death. BAD competes for the binding to Bcl-X(L), Bcl-2 and Bcl-W, thereby affecting the level of heterodimerization of these proteins with BAX. BAD can reverse the death repressor activity of Bcl-X(L), but not that of Bcl-2. BAD appears to act as a link between growth factor receptor signaling and the apoptotic pathways.

### **Other Names:**

Bcl2 antagonist of cell death, Bcl-2-binding component 6, Bcl-xL/Bcl-2-associated death promoter, Bbc6

### **Source and Purity:**

Rabbit polyclonal antibodies were produced by immunizing animals with a GST-fusion protein containing the N-terminal region of mouse BAD. Antibodies were purified by affinity purification using immunogen.

### **Storage Buffer and Condition:**

Supplied in 1 x PBS (pH 7.4), 100 ug/ml BSA, 40% Glycerol, 0.01% NaN<sub>3</sub>. Store at -20 °C. Stable for 6 months from date of receipt.

### **Species Specificity:**

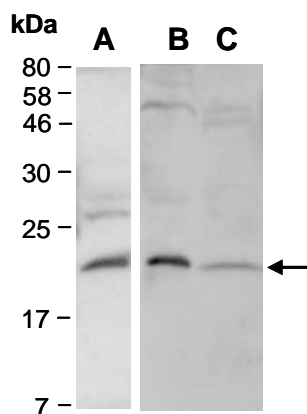
Mouse

### **Tested Applications:**

WB: 1:1,000-1:5,000 (detect endogenous protein\*)

\*: The apparent protein size on WB may be different from the calculated M.W. due to modifications.

**Product Data:**



**Fig 1.** Western blot of total cell extracts from mouse liver (A, B) or thymus (C), using 2 independent antibodies against 2 distinct regions of mouse BAD [A: R0221-1 (N-terminal); B, C: R0221-2 (C-terminal)] at RT for 2 h.