



Order: (888)-282-5810 (Phone)
(818)-707-0392 (Fax)
order@abiocode.com
Web: www.Abiocode.com

EZH2 (N) Antibody, Rabbit Polyclonal

Cat#: R0148-1

Quantity: 100 ul

Predicted M.W.: 85 kDa

Lot#: Refer to vial

Application: WB

Uniprot ID: Q15910

Background:

Enhancer of zeste homolog 2 (EZH2) belongs to the Polycomb-group (PcG) family. Members from this family form multimeric protein complexes, which play a role in maintaining the transcriptional repressive state of genes over successive cell generations. EZH2 interacts with the embryonic ectoderm development protein, the VAV1 oncoprotein, and the X-linked nuclear protein. The complex it forms with EED/PRC2 promotes the methylation of 'Lys-9' and 'Lys-27' of histone H3, which in turn leads to the transcriptional repression of the target genes.

Other Names:

ENX-1, ENX1, EZH1, KMT6, KMT6A, MGC9169, Histone-lysine N-methyltransferase EZH2, Lysine N-methyltransferase 6

Source and Purity:

Rabbit polyclonal antibodies were produced by immunizing animals with a GST-fusion protein containing the N-terminal region of human EZH2. Antibodies were purified by affinity purification using immunogen.

Storage Buffer and Condition:

Supplied in 1 x PBS (pH 7.4), 100 ug/ml BSA, 40% Glycerol, 0.01% NaN₃. Store at -20 °C. Stable for 6 months from date of receipt.

Species Specificity:

Human

Tested Applications:

WB: 1:1,000-1:5,000 (detect recombinant protein)

*: The apparent protein size on WB may be different from the calculated M.W. due to modifications.

Product Data:

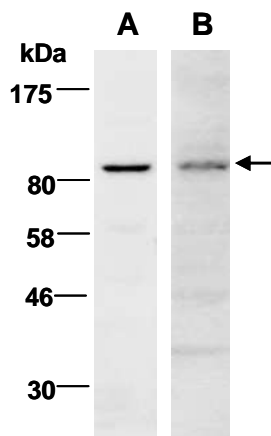


Fig 1. Western blot of total cell extracts from human HeLa, using 2 independent Abs against 2 distinct regions of human EZH2 [A: R0148-1 (N-terminal); B: R0148-2 (middle)] at RT for 2 h.