



Order: (888)-282-5810 (Phone)  
(818)-707-0392 (Fax)  
[order@abiocode.com](mailto:order@abiocode.com)  
Web: [www.Abiocode.com](http://www.Abiocode.com)

---

## PRSS1 (N) Antibody, Rabbit Polyclonal

**Cat#:** R0240-1

**Quantity:** 100 ul

**Predicted M.W.:** 27 kDa

**Lot#:** Refer to vial

**Application:** WB

**Uniprot ID:** P07477

### **Background:**

PRSS1 is also known as Trypsin-1, which belongs to the peptidase S1 family. PRSS1 has activity against the synthetic substrates Boc-Phe-Ser-Arg-Mec, Boc-Leu-Thr-Arg-Mec, Boc-Gln-Ala-Arg-Mec and Boc-Val-Pro-Arg-Mec. The single-chain form is more active than the two-chain form against all of these substrates. Defects in PRSS1 are a cause of pancreatitis (PCTT), a disease characterized by the presence of calculi in pancreatic ducts and it causes severe abdominal pain attacks.

### **Other Names:**

Trypsin-1, Beta-trypsin, Cationic trypsinogen, Serine protease 1, Trypsin I, TRP1, TRY1, TRYP1

### **Source and Purity:**

Rabbit polyclonal antibodies were produced by immunizing animals with a GST-fusion protein containing the N-terminal region of human PRSS1. Antibodies were purified by affinity purification using immunogen.

### **Storage Buffer and Condition:**

Supplied in 1 x PBS (pH 7.4), 100 ug/ml BSA, 40% Glycerol, 0.01% NaN<sub>3</sub>. Store at -20 °C. Stable for 6 months from date of receipt.

### **Species Specificity:**

Human, Mouse

### **Tested Applications:**

WB: 1:1,000-1:5,000 (detect recombinant protein)

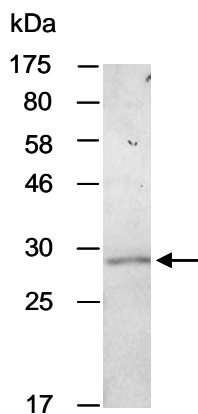
\*: The apparent protein size on WB may be different from the calculated M.W. due to modifications.



Order: (888)-282-5810 (Phone)  
(818)-707-0392 (Fax)  
[order@abiocode.com](mailto:order@abiocode.com)  
Web: [www.Abiocode.com](http://www.Abiocode.com)

---

**Product Data:**



**Fig 1.** Western blot of total cell extracts from mouse pancreas, using Ab (R0240-1) at RT for 2 h.

---

Last Update: 08/2011

**For research use only. Not for therapeutic or diagnostic purposes.  
Abiocode, Inc., 29397 Agoura Rd., Ste 106, Agoura Hills, CA 91301**