



Order: (888)-282-5810 (Phone)  
(818)-707-0392 (Fax)  
[order@abiocode.com](mailto:order@abiocode.com)  
Web: [www.Abiocode.com](http://www.Abiocode.com)

---

## **RBBP6 (N) Antibody, Rabbit Polyclonal**

**Cat#: R0058-1**

**Quantity: 100 ul**

**Predicted M.W.: 202 kDa**

**Lot#: Refer to vial**

**Application: WB**

**Uniprot ID: Q7Z6E9**

### **Background:**

Retinoblastoma binding protein 6 (RBBP6) is an E3 ubiquitin-protein ligase that promotes ubiquitination of YBX1, leading to its degradation by the proteasome. It binds to under-phosphorylated but not phosphorylated retinoblastoma tumor suppressor.

### **Other Names:**

My038, DKFZp686P0638, DKFZp761B2423, MY038, P2P-R, PACT, RBQ-1, SNAMA

### **Source and Purity:**

Rabbit polyclonal antibodies were produced by immunizing animals with a GST-fusion protein containing the N-terminal region of human RBBP6. Antibodies were purified by affinity purification using immunogen.

### **Storage Buffer and Condition:**

Supplied in 1 x PBS (pH 7.4), 100 ug/ml BSA, 40% Glycerol, 0.01% NaN<sub>3</sub>. Store at -20 °C. Stable for 6 months from date of receipt.

### **Species Specificity:**

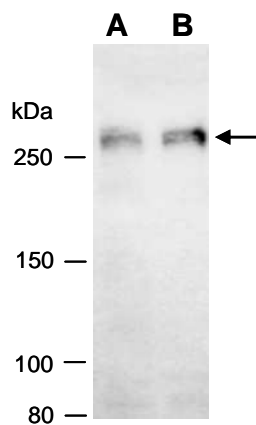
Human

### **Tested Applications:**

WB: 1:1,000-1:5,000 (detect endogenous protein\*)

\*: The apparent protein size on WB may be different from the calculated M.W. due to modifications.

**Product Data:**



**Fig 1.** Western blot of total cell extracts from (A) human 293T, (B) human HeLa, using Ab (R0058-1) at RT for 2 h. The observed M.W. of RBBP6 is approximately 270 kD.