



Order: (888)-282-5810 (Phone)  
(818)-707-0392 (Fax)  
[order@abiocode.com](mailto:order@abiocode.com)  
Web: [www.Abiocode.com](http://www.Abiocode.com)

---

## **SMDF (N) Antibody, Rabbit Polyclonal**

**Cat#: R0247-1**

**Quantity: 100 ul**

**Predicted M.W.: 32 kDa**

**Lot#: Refer to vial**

**Application: WB**

**Uniprot ID: Q02297-10**

### **Background:**

The neuregulin (also known as heregulin) cytokine family is comprised of four genes that encode a number of secreted or membrane-bound isoforms. All family members share an EGF-like domain that interacts with the ErbB family of tyrosine kinase receptors. The NRG1 gene is the most pleiotropic, encoding more than 14 soluble or transmembrane proteins. NRG1 isoforms can be classified into type I (neu differentiation factor, NDF; heregulin, HRG; acetylcholine receptor inducing activity, ARIA), type II (glial growth factor, GGF) and type III (sensory and motor neuron-derived factor, SMDF) isoforms. These isoforms are tissue-specifically expressed and differ significantly in their structures, and they play important roles during development of both the nervous system and the heart. Dysregulation of NRG1 has been linked to diseases such as cancer, schizophrenia and bipolar disorder (BPD).

### **Other Names:**

Pro-neuregulin-1, membrane-bound isoform SMDF; sensory and motor neuron derived factor

### **Source and Purity:**

Rabbit polyclonal antibodies were produced by immunizing animals with a GST-fusion protein containing the N-terminal region of human SMDF. Antibodies were purified by affinity purification using immunogen.

### **Storage Buffer and Condition:**

Supplied in 1 x PBS (pH 7.4), 100 ug/ml BSA, 40% Glycerol, 0.01% NaN<sub>3</sub>. Store at -20 °C. Stable for 6 months from date of receipt.

### **Species Specificity:**

Human

### **Tested Applications:**

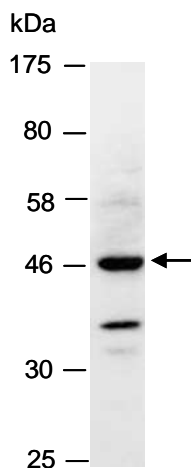
WB: 1:1,000-1:5,000 (detect endogenous protein\*)

\*: The apparent protein size on WB may be different from the calculated M.W. due to modifications.



Order: (888)-282-5810 (Phone)  
(818)-707-0392 (Fax)  
[order@abiocode.com](mailto:order@abiocode.com)  
Web: [www.Abiocode.com](http://www.Abiocode.com)

**Product Data:**



**Fig 1.** Western blot of total cell extracts from human MCF7, using Ab (R0247-1) at RT for 2 h. The observed M.W. of SMDF is approximately 47 kD.

Last Update: 08/2011

For research use only. Not for therapeutic or diagnostic purposes.  
Abiocode, Inc., 29397 Agoura Rd., Ste 106, Agoura Hills, CA 91301