



Order: (888)-282-5810 (Phone)  
(818)-707-0392 (Fax)  
[order@abiocode.com](mailto:order@abiocode.com)  
Web: [www.Abiocode.com](http://www.Abiocode.com)

---

## PDGFB (N) Antibody, Rabbit Polyclonal

**Cat#:** R0250-1

**Quantity:** 100 ul

**Predicted M.W.:** 27 kDa

**Lot#:** Refer to vial

**Application:** WB

**Uniprot ID:** P31240

### **Background:**

Platelet-derived growth factor subunit B (PDGFB) belongs to the PDGF/VEGF growth factor family, and is a potent mitogen for cells of mesenchymal origin. PDGF is released by platelets upon wounding and plays an important role in stimulating adjacent cells to grow and thereby heals the wound. PDGF exists as antiparallel disulfide-linked dimer of non-identical (A and B) chains. Homodimers of A and B chains are implicated in transformation processes. Binding of PDGF to its receptor elicits a variety of cellular responses.

### **Other Names:**

Platelet-derived growth factor subunit B, PDGF subunit B, PDGF-2, Platelet-derived growth factor B chain, Platelet-derived growth factor beta polypeptide, Proto-oncogene c-Sis, Sis

### **Source and Purity:**

Rabbit polyclonal antibodies were produced by immunizing animals with a GST-fusion protein containing the N-terminal region of mouse PDGFB. Antibodies were purified by affinity purification using immunogen.

### **Storage Buffer and Condition:**

Supplied in 1 x PBS (pH 7.4), 100 ug/ml BSA, 40% Glycerol, 0.01% NaN<sub>3</sub>. Store at -20 °C. Stable for 6 months from date of receipt.

### **Species Specificity:**

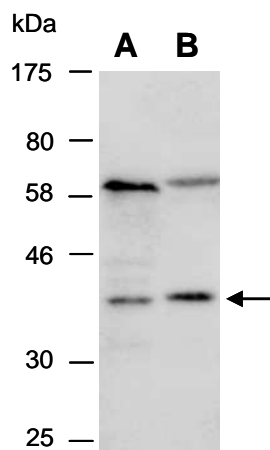
Human, Mouse

### **Tested Applications:**

WB: 1:1,000-1:5,000 (detect endogenous protein\*)

\*: The apparent protein size on WB may be different from the calculated M.W. due to modifications.

**Product Data:**



**Fig 1.** Western blot of total cell extracts from (A) mouse MEF, (B) human 293T, using Ab (R0250-1) at RT for 2 h. The observed M.W. for PDGFB is approximately 36 kD.