



Order: (888)-282-5810 (Phone)
(818)-707-0392 (Fax)
order@abiocode.com
Web: www.Abiocode.com

PD1 (M) Antibody, Rabbit Polyclonal

Cat#: R0252-1

Quantity: 100 ul

Predicted M.W.: 32 kDa

Lot#: Refer to vial

Application: WB

Uniprot ID: Q02242

Background:

Programmed cell death protein 1 (PD1) is a cell surface membrane protein of the immunoglobulin superfamily. PD1 is expressed in pro-B-cells and is thought to play a role in their differentiation. PD1 is also an inhibitory cell surface receptor involved in the regulation of T cell function during immunity and tolerance. Upon ligand binding, PD1 inhibits T cell effector functions in an antigen-specific manner. PD1 is a possible cell death inducer in association with other factors. Mice deficient for PD1 developed dilated cardiomyopathy and died from congestive heart failure.

Other Names:

Programmed cell death protein 1, Programmed death-1, Protein PD-1, mPD-1, CD279, PDCD1

Source and Purity:

Rabbit polyclonal antibodies were produced by immunizing animals with a GST-fusion protein containing the middle region of mouse PD1. Antibodies were purified by affinity purification using immunogen.

Storage Buffer and Condition:

Supplied in 1 x PBS (pH 7.4), 100 ug/ml BSA, 40% Glycerol, 0.01% NaN₃. Store at -20 °C. Stable for 6 months from date of receipt.

Species Specificity:

Mouse

Tested Applications:

WB: 1:1,000-1:5,000 (detect endogenous protein*)

*: The apparent protein size on WB may be different from the calculated M.W. due to modifications.

Product Data:

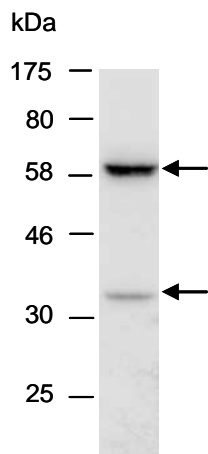


Fig 1. Western blot of total cell extracts from mouse brain, using Ab (R0252-1) at RT for 2 h. The slower migrating band with a M.W. of approximately 60 kD is likely the glycosylated PD1.