



Order: (888)-282-5810 (Phone)
(818)-707-0392 (Fax)
order@abiocode.com
Web: www.Abiocode.com

KLRG1 (C) Antibody, Rabbit Polyclonal

Cat#: R0253-2

Quantity: 100 ul

Predicted M.W.: 21 kDa

Lot#: Refer to vial

Application: WB

Uniprot ID: O88713

Background:

Killer cell lectin-like receptor subfamily G member 1 (KLRG1) is a single-pass type II cell membrane protein that is expressed specifically on natural killer (NK) cells and activated CD8 T-cells and is induced by pathogens and viral infections. KLRG1 forms monomer and disulfide-linked homodimer. KLRG1 plays an inhibitory role on natural killer (NK) cells and T-cell functions upon binding to their non-MHC ligands. KLRG1 may mediate missing self recognition by binding to a highly conserved site on classical cadherins, enabling it to monitor expression of E-cadherin/CDH1, N-cadherin/CDH2 and R-cadherin/CDH4 on target cells.

Other Names:

Killer cell lectin-like receptor subfamily G member 1, Mast cell function-associated antigen 2F1, Mafa

Source and Purity:

Rabbit polyclonal antibodies were produced by immunizing animals with a GST-fusion protein containing the C-terminal region of mouse KLRG1. Antibodies were purified by affinity purification using immunogen.

Storage Buffer and Condition:

Supplied in 1 x PBS (pH 7.4), 100 ug/ml BSA, 40% Glycerol, 0.01% NaN₃. Store at -20 °C. Stable for 6 months from date of receipt.

Species Specificity:

Human, Mouse

Tested Applications:

WB: 1:1,000-1:5,000 (detect endogenous protein*)

*: The apparent protein size on WB may be different from the calculated M.W. due to modifications.

Product Data:

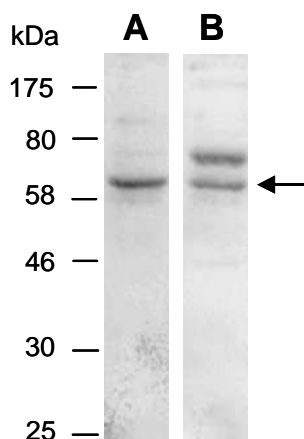


Fig 1. Western blot of total cell extracts from human Jurkat, using 2 independent Abs against 2 distinct regions of mouse KLRG1 [A: R0253-1 (middle); B: R0253-2 (C-terminal)] at RT for 2 h. The observed M.W. of KLRG1 is approximately 60 kD probably due to glycosylation.