



Order: (888)-282-5810 (Phone)  
(818)-707-0392 (Fax)  
[order@abiocode.com](mailto:order@abiocode.com)  
Web: [www.Abiocode.com](http://www.Abiocode.com)

---

## KLRG1 (vPair™) Antibodies

**Cat#:** R0253-vp

**Lot#:** Refer to vial

**Predicted M.W.:** 21 kDa

**Uniprot ID:** O88713

**Application:** WB

**Quantity:** 50 ul KLRG1 (M) (R0253-1) Rabbit Polyclonal Antibody &  
50 ul KLRG1 (C) (R0253-2) Rabbit Polyclonal Antibody

### **Product Introduction:**

vPair™ antibodies represent a pair of fully characterized antibodies that recognize two different regions of a target protein. The product is developed by Abiocode to address whether the signal observed truly represents the protein of interest, an often encountered issue in antibody-based assays. The use of a pair of fully characterized vPair™ antibodies in the same assay can validate signal specificity since vPair™ antibodies recognize two independent epitopes of the same protein. Different sets of vPair™ antibodies are developed at Abiocode to work with specific applications, including antibody arrays, Western blot, IP-Western, ChIP, IHC, and FACS.

### **Background:**

Killer cell lectin-like receptor subfamily G member 1 (KLRG1) is a single-pass type II cell membrane protein that is expressed specifically on natural killer (NK) cells and activated CD8 T-cells and is induced by pathogens and viral infections. KLRG1 forms monomer and disulfide-linked homodimer. KLRG1 plays an inhibitory role on natural killer (NK) cells and T-cell functions upon binding to their non-MHC ligands. KLRG1 may mediate missing self recognition by binding to a highly conserved site on classical cadherins, enabling it to monitor expression of E-cadherin/CDH1, N-cadherin/CDH2 and R-cadherin/CDH4 on target cells.

### **Other Names:**

Killer cell lectin-like receptor subfamily G member 1, Mast cell function-associated antigen 2F1, Mafa

### **Source and Purity:**

Rabbit polyclonal antibodies were produced by immunizing animals with a GST-fusion protein containing either the middle [KLRG1 (M) (R0253-1)] or the C-terminal [KLRG1 (C) (R0253-2)] regions of mouse KLRG1. Antibodies were purified by affinity purification using immunogen.



Order: (888)-282-5810 (Phone)  
(818)-707-0392 (Fax)  
[order@abiocode.com](mailto:order@abiocode.com)  
Web: [www.Abiocode.com](http://www.Abiocode.com)

---

**Storage Buffer and Condition:**

Supplied in 1 x PBS (pH 7.4), 100 ug/ml BSA, 40% Glycerol, 0.01% NaN<sub>3</sub>. Store at -20 °C. Stable for 6 months from date of receipt.

**Species Specificity:**

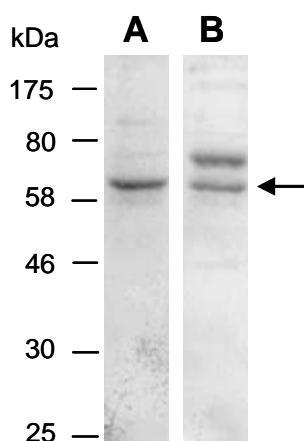
Human, Mouse

**Tested Applications:**

WB: 1:1,000-1:5,000 (detect endogenous protein\*)

\*: The apparent protein size on WB may be different from the calculated M.W. due to modifications.

**Product Data:**



**Fig 1.** Western blot of total cell extracts from human Jurkat, using 2 independent Abs against 2 distinct regions of mouse KLRG1 [A: R0253-1 (middle); B: R0253-2 (C-terminal)] at RT for 2 h. The observed M.W. of KLRG1 is approximately 60 kD probably due to glycosylation.

Last Update: 08/2011

---

For research use only. Not for therapeutic or diagnostic purposes.  
Abiocode, Inc., 29397 Agoura Rd., Ste 106, Agoura Hills, CA 91301