



Order: (888)-282-5810 (Phone)
(818)-707-0392 (Fax)
order@abiocode.com
Web: www.Abiocode.com

ABCG1 (M2) Antibody, Rabbit Polyclonal

Cat#: R0254-1

Quantity: 100 ul

Predicted M.W.: 76 kDa

Lot#: Refer to vial

Application: WB

Uniprot ID: P45844

Background:

ATP-binding cassette sub-family G member 1 (ABCG1) belongs to the ABC transporter superfamily, ABCG family. ABCG1 is a multi-pass membrane protein predominantly localized in the intracellular compartments mainly associated with the endoplasmic reticulum (ER) and Golgi membranes. ABCG1 may form heterodimers with several heterologous partners of the ABCG subfamily. ABCG1 is an active component of the macrophage lipid export complex involved in macrophage lipid homeostasis. ABCG1 may also be involved in intracellular lipid transport processes.

Other Names:

ATP-binding cassette sub-family G member 1, ATP-binding cassette transporter 8, White protein homolog, ABC8, WHT1

Source and Purity:

Rabbit polyclonal antibodies were produced by immunizing animals with a GST-fusion protein containing the middle region of human ABCG1. Antibodies were purified by affinity purification using immunogen.

Storage Buffer and Condition:

Supplied in 1 x PBS (pH 7.4), 100 ug/ml BSA, 40% Glycerol, 0.01% NaN₃. Store at -20 °C. Stable for 6 months from date of receipt.

Species Specificity:

Human

Tested Applications:

WB: 1:1,000-1:5,000 (detect endogenous protein*)

*: The apparent protein size on WB may be different from the calculated M.W. due to modifications.



Order: (888)-282-5810 (Phone)
(818)-707-0392 (Fax)
order@abiocode.com
Web: www.Abiocode.com

Product Data:

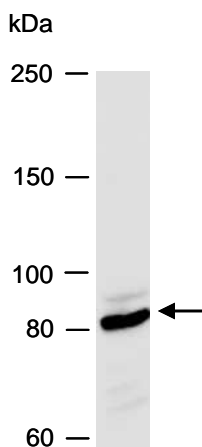


Fig 1. Western blot of total cell extracts from human HepG2, using Ab (R0254-1) at RT for 2 h.

Last Update: 08/2011

**For research use only. Not for therapeutic or diagnostic purposes.
Abiocode, Inc., 29397 Agoura Rd., Ste 106, Agoura Hills, CA 91301**