



Order: (888)-282-5810 (Phone)
(818)-707-0392 (Fax)
order@abiocode.com
Web: www.Abiocode.com

MMS21 (vPair™) Antibodies

Cat#: R0258-vp

Lot#: Refer to vial

Predicted M.W.: 28 kDa

Uniprot ID: Q96MF7

Application: WB

Quantity: 50 ul MMS21 (N) (R0258-1) Rabbit Polyclonal Antibody &
50 ul MMS21 (C) (R0258-2) Rabbit Polyclonal Antibody

Product Introduction:

vPair™ antibodies represent a pair of fully characterized antibodies that recognize two different regions of a target protein. The product is developed by Abiocode to address whether the signal observed truly represents the protein of interest, an often encountered issue in antibody-based assays. The use of a pair of fully characterized vPair™ antibodies in the same assay can validate signal specificity since vPair™ antibodies recognize two independent epitopes of the same protein. Different sets of vPair™ antibodies are developed at Abiocode to work with specific applications, including antibody arrays, Western blot, IP-Western, ChIP, IHC, and FACS.

Background:

MMS21 is also known as E3 SUMO-protein ligase NSE2E3, which is a SUMO-protein ligase component of the SMC5-SMC6 complex, a complex involved in DNA double-strand breaks by homologous recombination. The complex may promote sister chromatid homologous recombination by recruiting the SMC1-SMC3 cohesin complex to double-strand breaks. MMS21 acts as a E3 ligase mediating SUMO attachment to various proteins such as SMC6L1 and TRAX, and maybe the cohesin components RAD21 and STAG2. The SUMO protein-ligase activity of MMS21 is required for the prevention of DNA damage-induced apoptosis by facilitating DNA repair.

Other Names:

E3 SUMO-protein ligase NSE2, MMS21 homolog, hMMS21, Non-structural maintenance of chromosomes element 2 homolog, Non-SMC element 2 homolog, NSMCE2, C8orf36, MMS21

Source and Purity:

Rabbit polyclonal antibodies were produced by immunizing animals with a GST-fusion protein containing either N-terminal [MMS21 (N) (R0258-1)] or the C-terminal [MMS21 (C) (R0258-2)] regions of human MMS21. Antibodies were purified by affinity purification using immunogen.

For research use only. Not for therapeutic or diagnostic purposes.
Abiocode, Inc., 29397 Agoura Rd., Ste 106, Agoura Hills, CA 91301



Order: (888)-282-5810 (Phone)
(818)-707-0392 (Fax)
order@abiocode.com
Web: www.Abiocode.com

Storage Buffer and Condition:

Supplied in 1 x PBS (pH 7.4), 100 ug/ml BSA, 40% Glycerol, 0.01% NaN₃. Store at -20 °C. Stable for 6 months from date of receipt.

Species Specificity:

Human

Tested Applications:

WB: 1:1,000-1:5,000 (detect endogenous protein*)

*: The apparent protein size on WB may be different from the calculated M.W. due to modifications.

Product Data:

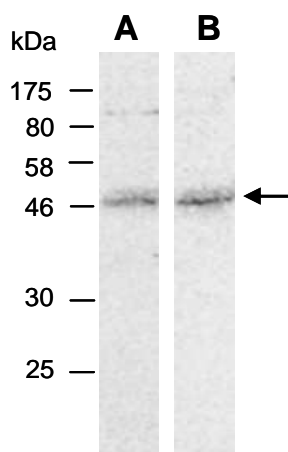


Fig 1. Western blot of total cell extracts from human MCF7, using 2 independent Abs against 2 distinct regions of human MMS21 [A: R0258-1 (N-terminal); B: R0258-2 (C-terminal)] at RT for 2 h. The observed M.W. of MMS21 is approximately 46 kD.

Last Update: 08/2011

For research use only. Not for therapeutic or diagnostic purposes.
Abiocode, Inc., 29397 Agoura Rd., Ste 106, Agoura Hills, CA 91301