



Order: (888)-282-5810 (Phone)
(818)-707-0392 (Fax)
order@abiocode.com
Web: www.Abiocode.com

BHLHE40 (N) Antibody, Rabbit Polyclonal

Cat#: R0268-1

Quantity: 100 ul

Predicted M.W.: 45 kDa

Lot#: Refer to vial

Application: WB

Uniprot ID: O35185

Background:

BHLHE40 is a basic helix-loop-helix protein expressed in various tissues and is induced by Bt2cAMP in chondrocytes. BHLHE40 is believed to be involved in the control of cell differentiation. It may function as a transcriptional factor to modulate chondrogenesis and neuronal differentiation. BHLHE40 Interacts with ubiquitin-conjugating enzyme UBE2I/UBC9, which may lead to proteasomal degradation.

Other Names:

basic helix-loop-helix family, member e40, SHARP-2, Class E basic helix-loop-helix protein 40, bHLHe40, Class B basic helix-loop-helix protein 2, bHLHb2, E47 interaction protein 1, EIP1, Stimulated by retinoic acid gene 13 protein, Bhlhb2, Clast5, Stra13, BHE40

Source and Purity:

Rabbit polyclonal antibodies were produced by immunizing animals with a GST-fusion protein containing the N-terminal region of mouse BHLHE40. Antibodies were purified by affinity purification using immunogen.

Storage Buffer and Condition:

Supplied in 1 x PBS (pH 7.4), 100 ug/ml BSA, 40% Glycerol, 0.01% NaN₃. Store at -20 °C. Stable for 6 months from date of receipt.

Species Specificity:

Human, Mouse

Tested Applications:

WB: 1:1,000-1:5,000 (detect endogenous protein*)

*: The apparent protein size on WB may be different from the calculated M.W. due to modifications.

Product Data:

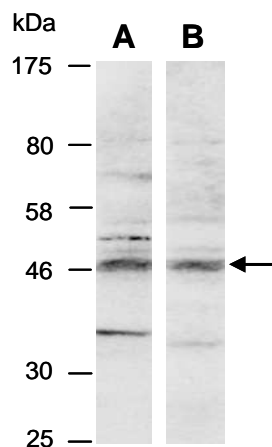


Fig 1. Western blot of total cell extracts from human MCF7, using 2 independent Abs against 2 distinct regions of mouse BHLHE40 [A: R0268-1 (N-terminal); B: R0268-2 (C-terminal)] at RT for 2 h.